

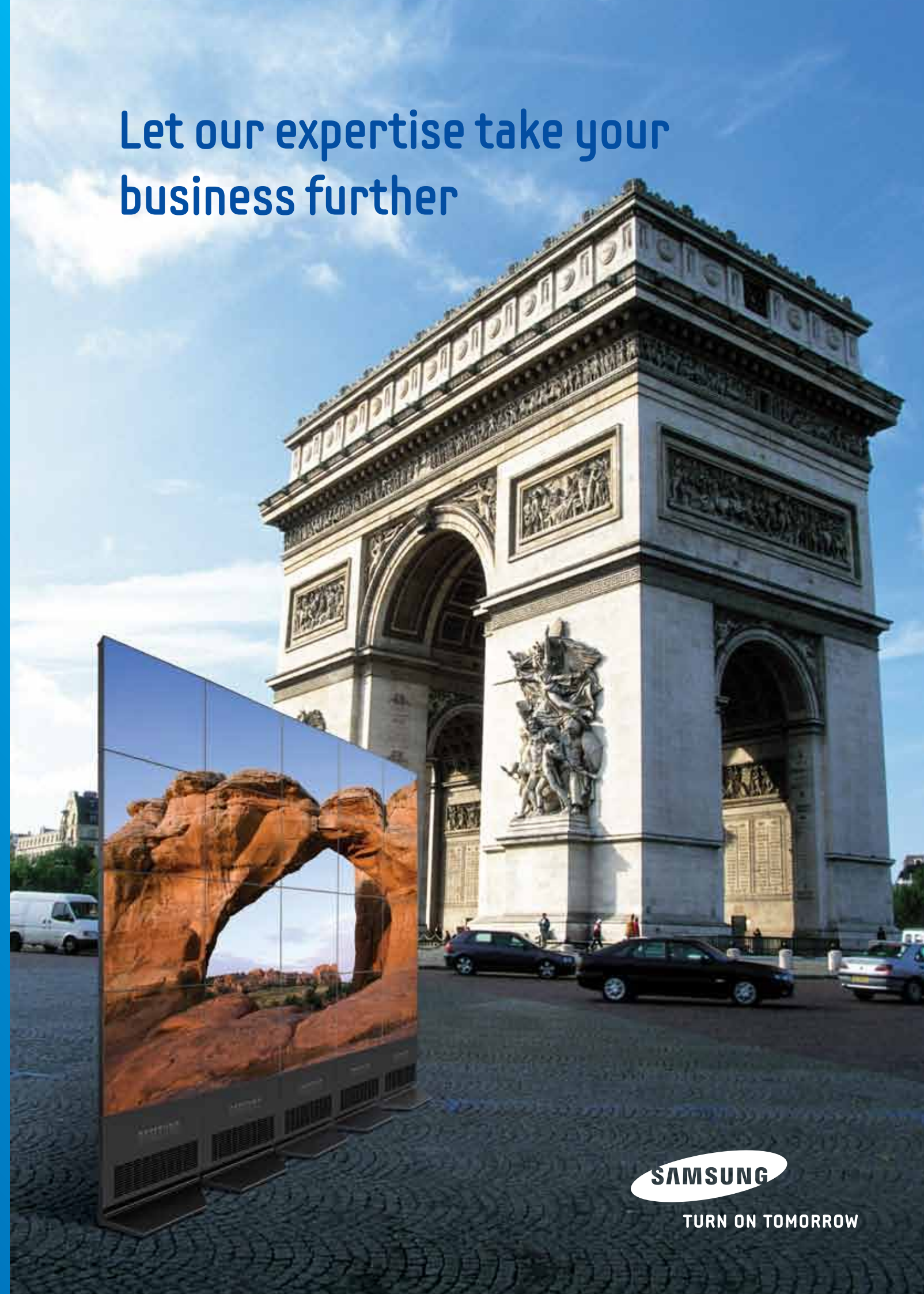
Let our expertise take your
business further

To learn more about the Samsung LFD Monitor or
to find your nearest retailer, please visit: www.samsunglfd.com

Samsung Electronics Co., Ltd.
Head Office (Suwon Korea)
416, Maetan-3Dong, Yongsong-Gu
Suwon City, Gyeonggi-Do, Korea 443-742



TURN ON TOMORROW



TURN ON TOMORROW

Samsung Large Format Display Monitor



We know what you need

You need a display that provides professional picture quality no matter what external lighting is like. You need a display so stylish that it attracts the eye but is subtle enough to guide the attention to information displayed on screen. You need an energy efficient signage solution that remains reliable for the duration of its long lifetime. You need a Samsung LFD monitor.

The visual shown is digitally composited in order to showcase Samsung LFD's product feature. It has nothing to do with actual installation.

BIG MALL

No.1 across the board

The same commitment to innovation that has led us to become the world's leading LFD, Monitor, Flat Panel TV display manufacturer is what drives us to create innovative new products that put the PlanetFirst™. Combining cutting-edge green technology and state-of-the-art design, Samsung LFD monitors are made to exceed your expectations.



Designed to meet your needs

What could be easier than a one-stop solution? Our extensive range of LFD monitors means that you are sure to find one that exactly matches your needs. Indoor, outdoor, network-connected or stand-alone, the list goes on and on. All you have to do is to choose one.



We see the world in green

Ranked by Greenpeace as the world's eco-friendliest display company, we take our responsibilities seriously. Continuing our initiative of putting the PlanetFirst, we are committed to creating high-impact displays that have a low environmental impact.



UX(n) Series >

Make sure your message gets across

On its own or part of a multi-display environment, the Samsung UX(n) Series makes a powerful statement. PC embedded, with 40GB of storage, and built-in speakers, its ultra-slim 11mm bezel enables the creation of a seamless video wall that guarantees your customers see what you want them to see.



uVending >

Whatever you sell, uVending sells it well

The interactive uVending machine will change the way you do business. With its 46" DID screen it promotes products in an eye-catching environment. Its wireless network module provides real-time information and its intelligent shock sensor and camera protect it, and your stock, from vandalism and theft.

AIRPORT



DX(n) Series

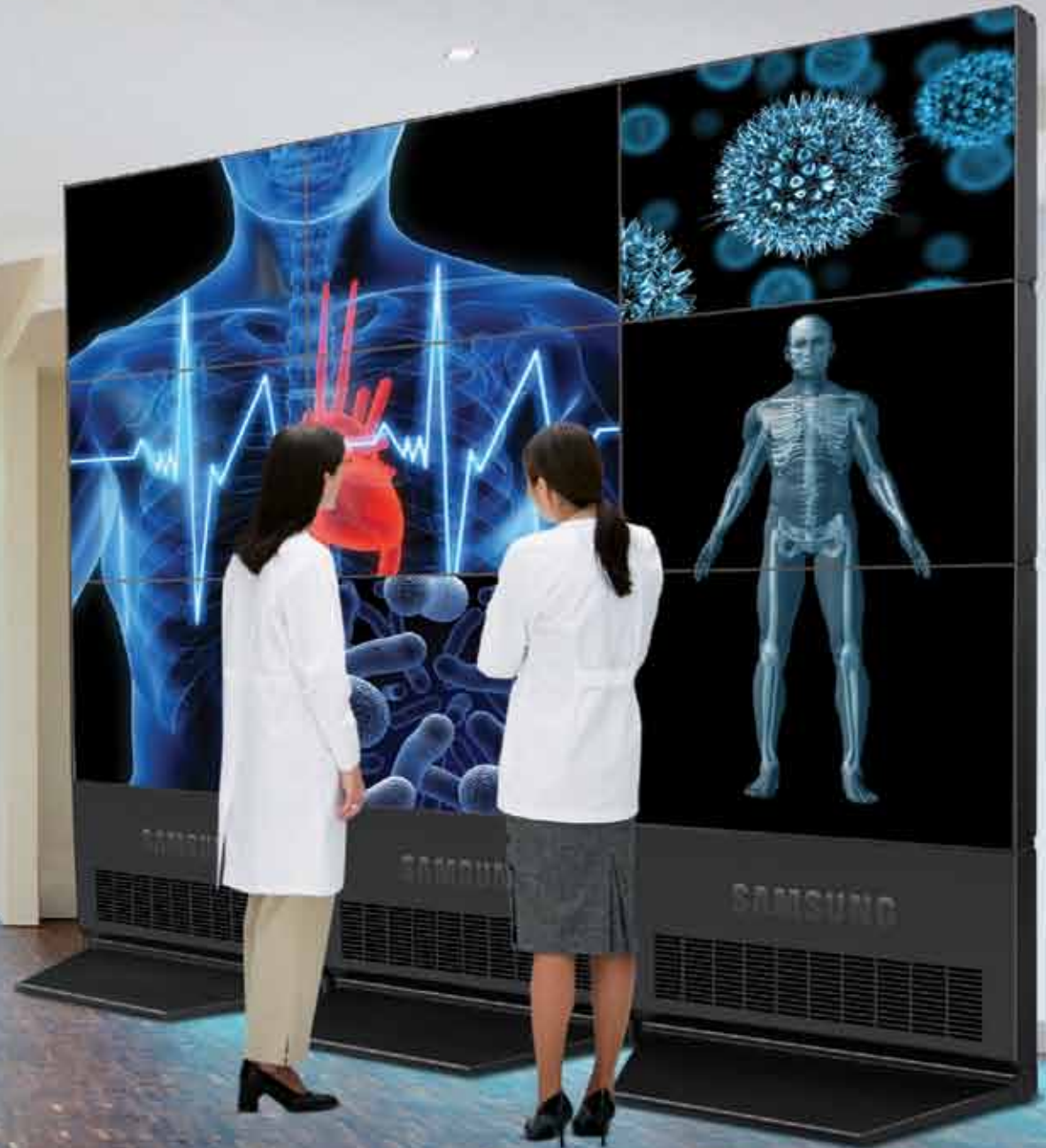
Essential information, available 24/7

Designed for 24/7 use, the Samsung DX(n) Series delivers real-time information, all the time. Its Full HD 1080p picture quality, high readability, built-in speakers, and 40GB HDD ensure that when your customers need to know something, the information is always on-screen.

DM Series > Information you can touch

The Samsung DM Series offers intuitive interaction with information. Exceptional readability and reliability make it ideal for use 24 hours a day, 7 days a week and its extreme low power consumption ensures that it provides the same level of excellence for the duration of its extended lifetime.

HOSPITAL



TSn Series >

Clarity that can save a life

Samsung TSn Series LFD monitors are designed to provide ultra-fine image quality that has the power to save lives. Their high-resolution interactive touch screen is safeguarded by protective glass that guarantees they deliver precision information when it is needed most.



UT(n) Series >

When bigger is better

With a super-slim 6.7mm bezel, the Samsung UT(n) Series is designed to provide the ultimate multi-display environment. Its ultra-high resolution image quality and 700cd/m² brightness enable accurate analysis and diagnosis by presenting even the smallest detail to perfection.

OUTDOOR



DR(n)-S Series Always clear, whatever the weather

For high-impact window placement no display comes close to the Samsung DR(n)-S. Its high-visibility screen remains bright and clear even in direct sunlight.



DRn-A Series Put your message out on the streets

Designed to withstand any weather condition, the Samsung DRn-A combines innovative touch screen operation with intelligent anti-vandalism features. With its built-in high-spec PC, Wi-Fi, and Bluetooth connectivity, it puts your message out there on the streets.

FINANCE



EX(n) Series >

The world's slimmest LED LFD

The ultra-slim, lightweight Samsung EX(n) Series takes LED LFD to the next level. Its embedded PC provides premium performance with Full HD picture quality and eco-friendly energy efficiency, reducing operating costs and enhancing your business.

TS(n) Series >

More sizes to choose from

With screen sizes ranging from 23 inches right up to 80 inches, the Samsung TS(n) Series offers more ways to display information. Their tactile touch screen operation enables users to interact intuitively with the high-quality images presented on-screen and experience a new way of working.

E-BOARD



650TS > The next generation of education

The Samsung 650TS represents the evolution of educational e-Boards. Its 65" Full HD Touch screen facilitates intelligent, interactive communication within the classroom and encourages students to engage their attention, creating a learning environment that is both efficient and effective.

Enhanced Functionality



Powerful, professional display solutions

Designed for versatility, Samsung LFD monitors provide a versatile range of functions and features that enable them to perform to perfection, anywhere. Indoors, outdoors, stand-alone or in a video wall, they are created to allow you to choose how, where, and what you want to display.

Support video wall function

To enable the creation of a seamless video wall format, Samsung LFD monitors feature two display modes, Natural and Full. Supporting 1x1 to 10x10 video wall formats, Samsung LFD monitors are designed with slimmer bezels and embedded processors so you can build a bigger, better video wall.



Enhanced multi-display control

Samsung LFD monitors feature upgraded Multi Display Control (MDC) software that enables a large number of monitors to be controlled through their embedded RS232 and RJ45 interfaces. The MDC software is easy and intuitive to use, allowing monitors to be remotely controlled over both short and long distances.



Powerful built-in PC

Samsung LFD monitors are equipped with a powerful built-in PC, providing an efficient, cost-effective, professional multi-network solution. With easy configuration through LAN and management through server-side software, they give you everything you need to convey your message with clarity and conviction.

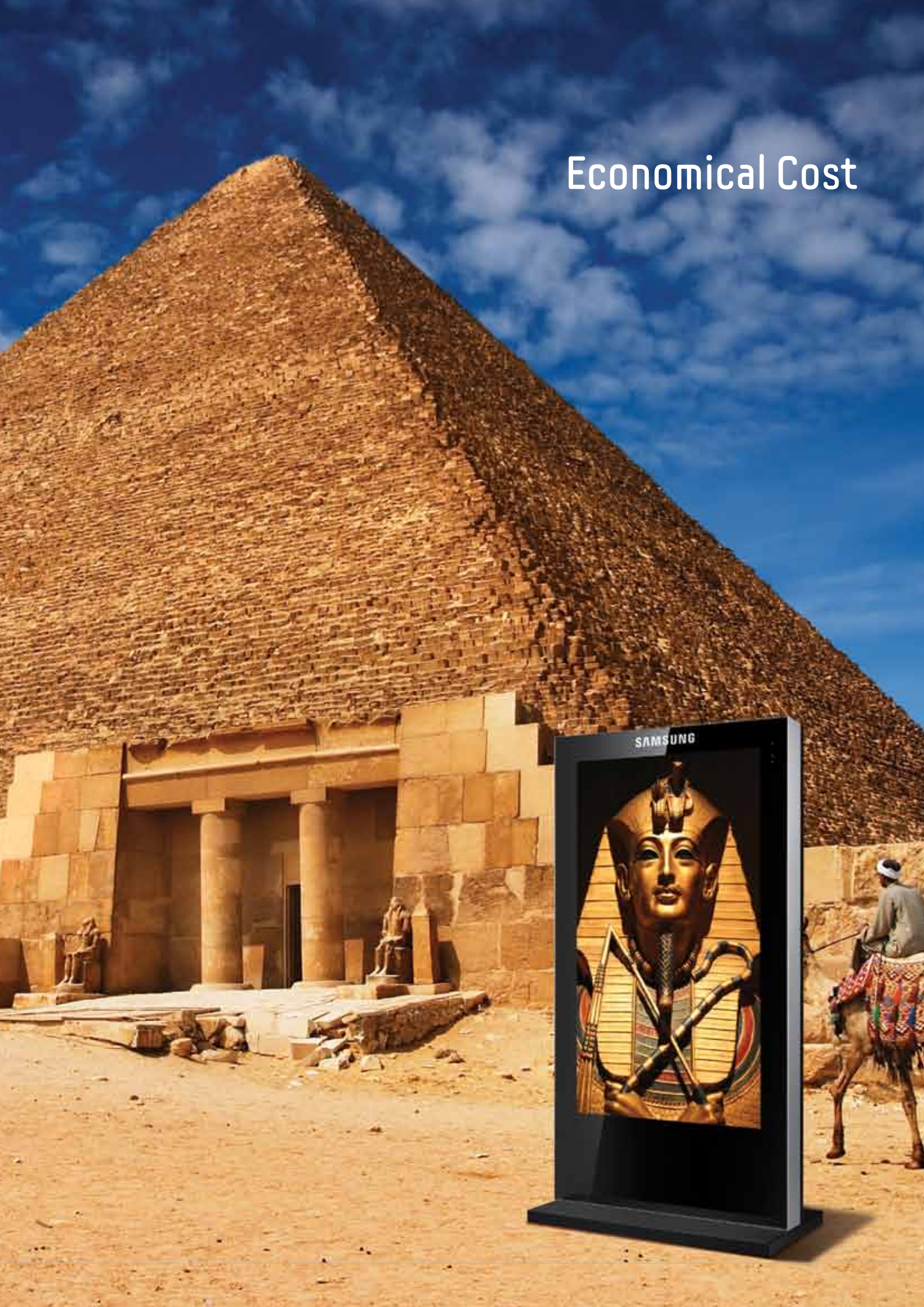


Versatile screen rotation

Because we know what you need from your LFD, ours support both landscape and portrait modes. Our innovative MagicRotation software allows the LFD to be pivoted through 90 degrees, enabling you to create a versatile display environment that always meets your needs.



Economical Cost



A cost-effective way to display

The extreme energy saving and reliability of Samsung LFD solutions enables you to create a high-impact, low-cost digital display environment. With their powerful built-in PC, long lifetime, and extended after-sales service, they give you everything you need from a LFD.

A professional panel for life

Designed for 24/7 use, Samsung LFD monitors feature a tough DID panel that is guaranteed to remain reliable and readable for the duration of its life. With a lifetime of over 50,000 hours, low operating temperature, and anti-dust and anti-image retention features, Samsung LFD monitors are built to last.



Reduced cost, enhanced performance

Samsung LFD monitors are equipped with Display Port and DVI Chain features to enhance connectivity. Eliminating the need to purchase an extra distributor or external equipment, Samsung LFD monitors are the most cost-effective way to create a powerful, professional digital display.



24/7 WorldWide support

With 24/7 WorldWide support available, Samsung LFD monitors are the best choice for your business. The extended warranty and ease of access to technical assistance ensures that Samsung LFD monitors are a reliable and cost-effective professional display solution for all your business needs.



Eco Solution



Being green never looked so good

As the world's leading display manufacturer, we are aware of our responsibility to the environment. Our LFD monitors are designed to not only to generate profit but to create a greener planet as well. Featuring advanced Energy Saving and Eco-operation modes, enhanced LED BLU lifetimes, our LFD monitors provide professional display solutions that put the PlanetFirst™

Redefining technology through Eco-innovation

Designed with the environment in mind, Samsung LFD monitors' use of innovative green-technology enables them to use up to 30% less power than conventional LFDs. Their intelligent Brightness Sensor automatically assesses ambient light conditions to optimize on-screen brightness, thereby extending the readability and reliability of the panel so that it performs to perfection for the duration of its life.



Eco-LED BLU

Samsung LFD monitors' intelligent use of LED as a backlight source means that they are a more environmentally friendly display solution. Halogen and Mercury free, and using up to 30% less power than conventional LFDs, Samsung LFDs are a greener way to get your message across.



Energy Star 5.0 certified

Satisfying the latest Energy Star 5.0 criteria, Samsung LFD monitors are the most environmentally friendly products on the market. Using up to 70% less power than conventional displays, they are guaranteed to save your business money for the duration of their extended lifetime.



Easy installation, Easy operation



Easy installation, Easy operation

Vertical, horizontal, curved, or flat, Samsung LFD monitors can be combined to create the ultimate digital display environment. Their easy installation and operation means that all you have to do is decide where they should be placed for maximum impact.

Easy network maintenance and upgrade

Samsung LFD monitors are designed to make your life easier. Their innovative slide-in network module enables convenient, comfortable access to the PC board, allowing essential maintenance and upgrades to be undertaken in a fraction of the time it would take with a conventional LFD.



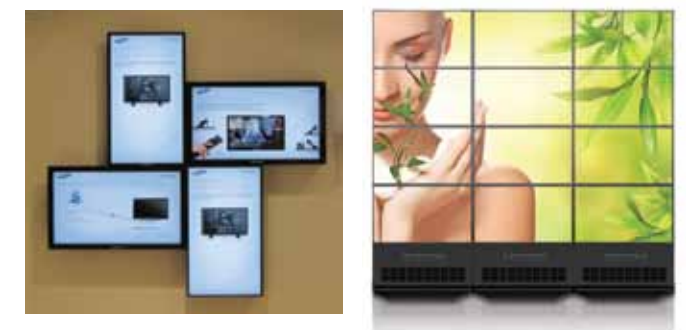
Web-based network management (MagicInfo i)

Our state-of-the-art MagicInfo i software is a web-based network solution that allows you to manage multiple Samsung LFD monitors from anywhere in the world. Content can be monitored and created with comfort and convenience, enabling you to optimize your display for maximum impact.



Build a better video wall

Samsung LFD monitors' Easy Interlocking feature enables them to be stacked as if they were bricks, allowing you to create the ultimate digital display environment. Requiring no additional support, they can be combined in an almost unlimited number of height and width formats to create an incredible freestanding video wall format.



Excellent Solution



Your business is our business

Whatever your needs may be, we are sure that there's a Samsung LFD monitor that will meet your needs. Our proprietary hardware and software is designed to provide you with solutions that give you everything you are looking for, and a little bit more.

Intelligent interactive solutions

Enter a world of limitless possibilities with Samsung LFD. Our range of intelligent display solutions is designed to make your business better. Take the uVending for example; its interactive touch screen and ability to provide statistical information about your customer base will help you know your customers and your business better.



Customize your creation

The positional flexibility of Samsung LFD monitors enables you to create a high-impact display environment that is tailor-made to meet your needs. The unrivaled versatility of our Basic Panel kits allows you to customize design and form, helping you to convey your message with clarity and conviction.



Opening up your options

The versatility of Samsung LFD monitors is second-to-none. Featuring VoIP, PCOIP, and Thin Client, they offer cutting-edge convergence and a wider range of options. The applications of Samsung LFD monitors' enhanced convergence range from video conference to health care environments, giving you everything you need, whatever your needs may be.



Samsung LFD, the first choice for the business world

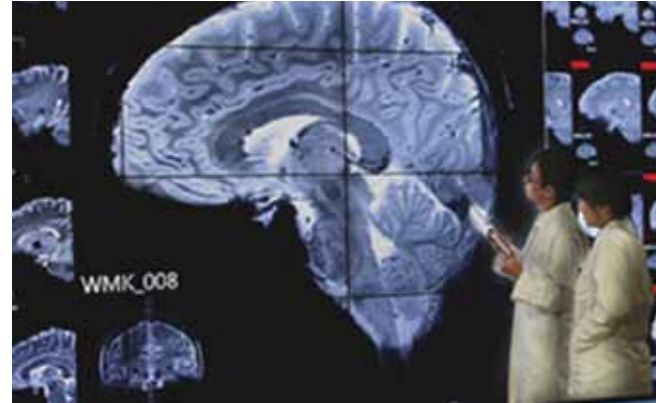
All over the world, Samsung LFD monitors are the first choice display solution for the discerning consumer. Museums, airports, hospitals, industrial enterprises, and leading malls have all chosen our professional LFD products to promote their business. We think that you should too.

Success Biz Case #1. - China
LFD in Museum of the Terra-cotta Warriors



460UT:16 Units / 700DXn:3 Units

Success Biz Case #2. - S. Korea
Neuroscience Research Institute



460UTN-UD:16 units / MID462:4 units (4x4 video wall)

Success Biz Case #3. - Netherlands
Energy Company, AZN



460UX:24 Units with PC monitors

Success Biz Case #4. - China
Guangzhou Airport



460UX:320 Units

Success Biz Case #5. - Malaysia
PLAZA LOW YAT



460UXn:28 Units

Success Biz Case #6. - China
Beijing City Metro line no.1/2



460MX-2:600 Units / 400MX-2:100 Units



E-Board Solution / 650TS

Interactive multimedia education

The super-slim style of the Samsung 650TS creates a powerful visual presence. The effectiveness of its high-visibility touch screen is enhanced by its wide viewing angle, ensuring that every student has access to information displayed on-screen. With its built-in speaker, web-cam, dummy pen, and U-Class educational software, it brings interactive multimedia into the educational environment.

Designed for teaching, designed for learning

Because the Samsung 650TS is designed for education, it features tools that promote a powerful learning environment. Providing drag-and-drop access to its built-in Content Library, full multimedia support, and multi-content screen formats, it allows teachers to make notes on any content displayed on-screen; heightening students' concentration and making education interactive.



An interactive learning experience

Our U-Class software provides an interactive learning experience. This powerful classroom management solution gives easy access to students' PC screens, allowing teachers and students to interact with educational material in a fun and future-forward way. By enabling easy selection of individual exam questions and test result assessment it has proved highly popular with teachers across the board.



Dedicated learning software

The Samsung 650TS features dedicated educational software that is designed to help teachers maintain their students' attention. Eliminating advertisements from Internet content, its educational user interface creates a powerful learning environment. With its wireless microphone, teachers are given more freedom of movement, enabling them to teach with increased efficiency.



An intuitive learning experience

Our U-Class software is designed to give teachers tools that help make education more intuitive and effective. With a variety of user-friendly functions that can be customized by the teacher, the Samsung 650TS gives quick, convenient access to Blackboard features in either Windows desktop or Blackboard mode.





LED LFD / EX(n) Series

LED LFD, the evolution of digital displays

Samsung EX(n) Series LED LFD monitors represent the evolution of digital displays. Their unique eco-friendly features enable them to use 30% less power than last year's models, helping to save money and the environment. Ultra-slim, ultra-lightweight, with Full HD images and enhanced connectivity and convergence, they allow you to create a professional display that is designed to meet your needs with superior style.

Eco-energy saving

To help conserve natural resources and lower carbon emissions, 2010 Samsung EX(n) Series monitors use innovative LED BLU technology to reduce power consumption more than 30%. These dramatic energy savings usher in an age of enhanced eco-awareness that will help restore the balance of the natural world.



Making economic sense

Samsung LED LFD monitors make sense from an ecological and an economic point of view. Their built-in PC eliminates the need to purchase additional PCs and their dramatically reduced power consumption ensures that they operate with exceptional economic efficiency for the duration of their lives.



Ultra-slim, ultra-light

The ultra-slim, ultra-light design of Samsung LED LFD monitors heralds a new era of elegance and efficiency. Their ultra-slim style effortlessly draws eyes to the screen and their ultra-light design can be lifted and carried by anyone, enabling easy installation and maintenance, and allowing you to create a high-impact display that saves space with style.



Weight : 12.0kg(40")

Giving you everything you need

Samsung LED LFD monitors are designed to be adaptable to any public display usage. Featuring Full HD images, expanded digital connectivity, multi-display control, and our innovative MagicInfo I software, they allow you to create a digital display environment that is always clear and always comfortable.



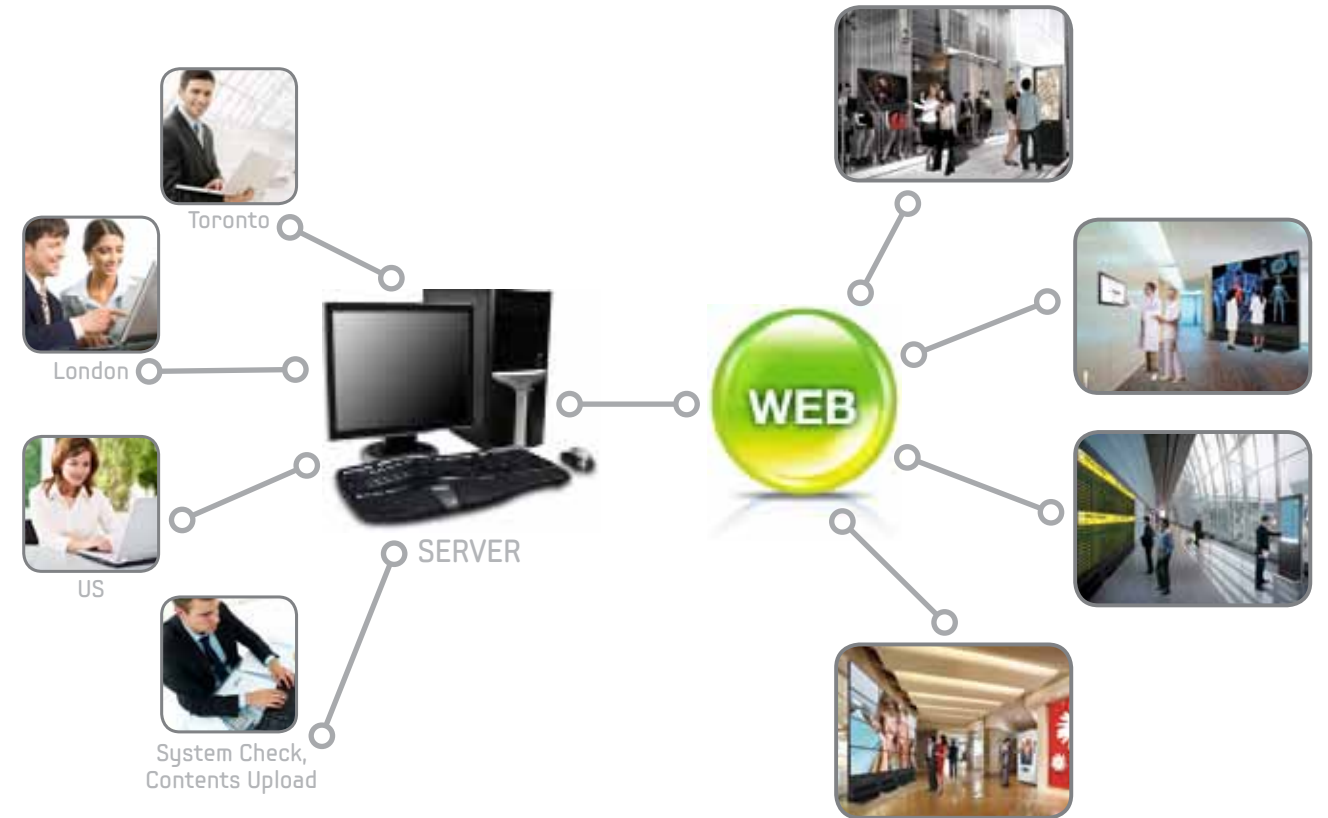


MagicInfo I

Samsung LFD monitors feature our innovative MagicInfo I network software solution. MagicInfo I enables anywhere access to the server, allowing LFD content to be managed and maintained from anywhere in the world. With its expanded range of content support, MagicInfo I gives multi-access to the server so you can create an advanced digital display environment that more than meets your needs.

Web Based Solution

Because MagicInfo I is a web based software solution, you can enjoy a more intuitive and intelligent network display experience. With an upgraded range of transition effects, plug-ins, and interactive solutions, it enables you to create the perfect platform for professional presentations.



Access anytime, anywhere

MagicInfo I provides anytime, anywhere access to the web server, enabling Samsung LFD monitors to be controlled with unique convenience. By enabling you to check the operation of the system and display operation, MagicInfo I allows you to create a more powerful LFD network.

Simple software upgrade

With automatic software upgrades scheduled directly from the server, MagicInfo I is a more efficient way of managing your display network. Its intuitive user interface and enhanced features will ensure that your Samsung LFD monitors are always up-to-date.

Easy Scheduling

MagicInfo I's innovative user interface enables Easy Scheduling with Perfect Hardware control. The Urgent Schedule feature is an advanced tool that overrides normal scheduled content with urgent content such as text messages so that important information is displayed immediately.

Easy content arrangement

iAuthor allows you to select the screen resolution, arrange content, and customize your display to meet your needs. With an intuitive user-friendly interface and over 300 transition effects, iAuthor is a smarter way of setting up your display.

Convenient LFD check

Remote access to the server enables you to enjoy more interaction with your display. By allowing you to monitor the LFD screens, MagicInfo I gives you real-time information so you can check how your displays are performing at any time.

Simple USB publishing

Publishing self-created content is easy when you use the innovative USB Publish feature. Simply schedule the content to be stored on your USB memory stick, plug it in, and USB Publish will do the rest.

LED EX series

ECO Solution

Model		400EX	400EXn	460EX	
Panel	Diagonal Size	40"	40"	46"	
	Type	120Hz, LED BLU	120Hz, LED BLU	120Hz, LED BLU	
	Resolution	1920 X 1080	1920 X 1080	1920 X 1080	
	Pixel Pitch	0.46125(H) X 0.46125(W)	0.46125(H) X 0.46125(W)	0.53025 (H) X 0.53025(W)	
	Brightness(Typ.)	450 (Typ.) / 400 (Min)	450 (Typ.) / 400 (Min)	450 (Typ.) / 400 (Min)	
	Contrast Ratio	5,000:1	5,000:1	5,000:1	
	Dynamic C/R	10,000:1	10,000:1	10,000:1	
	Viewing Angle(H/M)	178 / 178	178 / 178	178 / 178	
	Response Time(G-to-G)	6 msec	6 msec	6 msec	
	Color Space(CIE1931)	80%	80%	80%	
Connectivity	PC inputs	D-Sub	D-Sub	D-Sub	
	Video inputs	HDMI	HDMI	HDMI	
	PC outputs	DVI-out	DVI-out	DVI-out	
	Audio outputs	STEREO JACK	STEREO JACK	STEREO JACK	
	Audio inputs	JACK (PC)	JACK (PC)	JACK (PC)	
	MDC	RS232C IN/OUT, RJ45	RS232C IN/OUT, RJ45	RS232C IN/OUT, RJ45	
	5V OUT	X	X	X	
Power	Power Consumption	140W (max) / 115W (typ.)	200W (max) / 145W (Typ.)	160W (max) / 135W (Typ.)	
	Power Consumption at Stand-by	2W	4W	2W	
	Power Consumption at Power-off	1W	4W	1W	
	Power Supply	AC100-240 V~(+/- 10 %),50/60Hz	AC100-240 V~(+/- 10 %),50/60Hz	AC100-240 V~(+/- 10 %),50/60Hz	
Mechanical Spec	VESA Mount	400 X 400mm	400 X 400mm	400 X 400mm	
	Cabinet Color No	Black (BK23)	Black (BK23)	Black (BK23)	
	Weight (Set/Package):kg	Normal 12.0	12.7	15.0	
	Protection Glass	N/A	N/A	N/A	
	Dimension (W/O Stand):mm	Normal 949.7 X 580.6 X 42.6	949.7 X 580.6 X 42.6	1082.3 X 654.5 X 39.9	
	Protection Glass	N/A	N/A	N/A	
	Dimension (With Stand):mm	N/A	N/A	N/A	
	Packing Dimension:mm	TBD	TBD	TBD	
	Bezel Width:mm	29.5	29.5	29.5	
	Protection Glass	X	X	X	
Operation	Operating Temperature	Normal 0°C ~ 40°C (w/o Network)	10°C ~ 40°C (with Network)	0°C ~ 40°C (w/o Network)	
	Protection Glass	N/A	N/A	N/A	
	Humidity	10% ~ 80%	10% ~ 80%	10% ~ 80%	
	MTBF	50,000hrs	50,000hrs	50,000hrs	
Feature	Network	X	0 (MagicInfo Pro)	X	
	Speaker	15W X 2 built-in	15W X 2 built-in	15W X 2 built-in	
	Special Features	- DC Image Sticking Reduction Algorithm - Lamp Error Detection - Brightness Sensor - Temperature Sensor - RJ 45 / RS232C - Built in Speaker - Digital Loop Out - PIP / PBP	- DC Image Sticking Reduction Algorithm - Lamp Error Detection - Brightness Sensor - Temperature Sensor - RJ 45 / RS232C - Built in Speaker - Digital Loop Out - PIP / PBP	- DC Image Sticking Reduction Algorithm - Lamp Error Detection - Brightness Sensor - Temperature Sensor - RJ 45 / RS232C - Built in Speaker - Digital Loop Out - PIP / PBP	
	Energy Star 5.0 Certified	Yes	Inapplicable	Yes	
	Network	Operating System	N/A	Window XP Embedded Standard	N/A
		CPU		Dual-Core CPU (2.3GHz)	
		FDM		HDD 80GB	
		Memory		DDR2 1GB	
		Ethernet		Gigabit LAN	
		USB		3 USB	
VGA Out			1 VGA Out		
MagicInfo features			- Contents Play (Photo, Movie, Music, Offices, PDF, Flash, Web Page, Text, Input sources) - Contents scheduler - MDC via Network - Diagnosis (Lamp, Temperature, etc.) - Network System information - Asset management - Global Network		
Accessory	Manuals	Quick Setup Guide, Warranty Card, Application CD	Quick Setup Guide, Warranty Card, Application CD	Quick Setup Guide, Warranty Card, Application CD	
	Cables	Power Cord, D-SUB	Power Cord, D-SUB	Power Cord, D-SUB	
	Others	Remote Controller, Batteries	Remote Controller, Batteries	Remote Controller, Batteries	

* Design & Specifications are subject to change without notice.

Model		460EXn	550EX	550EXn	
Panel	Diagonal Size	46"	55"	55"	
	Type	120Hz, LED BLU	120Hz, LED BLU	120Hz, LED BLU	
	Resolution	1920 X 1080	1920 X 1080	1920 X 1080	
	Pixel Pitch	0.53025 (H) X 0.53025(W)	0.63(H) X 0.63(W)	0.63(H) X 0.63(W)	
	Brightness(Typ.)	450 (Typ.) / 400 (Min)	450 (Typ.) / 400 (Min)	450 (Typ.) / 400 (Min)	
	Contrast Ratio	5,000:1	5,000:1	5,000:1	
	Dynamic C/R	10,000:1	10,000:1	10,000:1	
	Viewing Angle(H/M)	178/178	178/178	178/178	
	Response Time(G-to-G)	6 msec	6 msec	6 msec	
	Color Space(CIE1931)	80%	80%	80%	
Connectivity	PC inputs	D-Sub	D-Sub	D-Sub	
	Video inputs	HDMI	HDMI	HDMI	
	PC outputs	DVI-out	DVI-out	DVI-out	
	Audio outputs	STEREO JACK	STEREO JACK	STEREO JACK	
	Audio inputs	JACK (PC)	JACK (PC)	JACK (PC)	
	MDC	RS232C IN/OUT, RJ45	RS232C IN/OUT, RJ45	RS232C IN/OUT, RJ45	
	5V OUT	X	X	X	
Power	Power Consumption	220W (max) / 170W (Typ.)	190W (max) / 165W (Typ.)	250W (max) / 200W (Typ.)	
	Power Consumption at Stand-by	4W	2W	4W	
	Power Consumption at Power-off	4W	1W	4W	
	Power Supply	AC100-240 V~(+/- 10 %),50/60Hz	AC100-240 V~(+/- 10 %),50/60Hz	AC100-240 V~(+/- 10 %),50/60Hz	
Mechanical Spec	VESA Mount	400 X 400mm	400 X 400mm	400 X 400mm	
	Cabinet Color No	Black (BK23)	Black (BK23)	Black (BK23)	
	Weight (Set/Package):kg	Normal 15.7 Kg	18.3 Kg	19.0 Kg	
	Protection Glass	N/A	N/A	N/A	
	Dimension (W/O Stand):mm	Normal 1082.3 X 654.5 X 39.9	1273.3 X 763.3 X 39.9	1273.3 X 763.3 X 39.9	
	Protection Glass	N/A	N/A	N/A	
	Dimension (With Stand):mm	N/A	N/A	N/A	
	Packing Dimension:mm	TBD	TBD	TBD	
	Bezel Width:mm	29.5	29.5	29.5	
	Protection Glass	X	X	X	
Operation	Operating Temperature	Normal 10°C ~ 40°C (with Network)	0°C ~ 40°C (w/o Network)	10°C ~ 40°C (with Network)	
	Protection Glass	N/A	N/A	N/A	
	Humidity	10% ~ 80%	10% ~ 80%	10% ~ 80%	
	MTBF	50,000hrs	50,000hrs	50,000hrs	
Feature	Network	0 (MagicInfo Pro)	X	0 (MagicInfo Pro)	
	Speaker	15W X 2 built-in	15W X 2 built-in	15W X 2 built-in	
	Special Features	- DC Image Sticking Reduction Algorithm - Lamp Error Detection - Brightness Sensor - Temperature Sensor - RJ 45 / RS232C - Built in Speaker - Digital Loop Out - PIP / PBP	- DC Image Sticking Reduction Algorithm - Lamp Error Detection - Brightness Sensor - Temperature Sensor - RJ 45 / RS232C - Built in Speaker - Digital Loop Out - PIP / PBP	- DC Image Sticking Reduction Algorithm - Lamp Error Detection - Brightness Sensor - Temperature Sensor - RJ 45 / RS232C - Built in Speaker - Digital Loop Out - PIP / PBP	
	Energy Star 5.0 Certified	Inapplicable	Yes	Inapplicable	
	Network	Operating System	Window XP Embedded Standard	N/A	Window XP Embedded Standard
		CPU	Dual-Core CPU (2.3GHz)		Dual-Core CPU (2.3GHz)
		FDM	HDD 80GB		HDD 80GB
		Memory	DDR2 1GB		DDR2 1GB
		Ethernet	Gigabit LAN		Gigabit LAN
		USB	3 USB		3 USB
VGA Out		1 VGA Out		1 VGA Out	
MagicInfo features		- Contents Play (Photo, Movie, Music, Offices, PDF, Flash, Web Page, Text, Input sources) - Contents scheduler - MDC via Network - Diagnosis (Lamp, Temperature, etc.) - Network System information - Asset management - Global Network		- Contents Play (Photo, Movie, Music, Offices, PDF, Flash, Web Page, Text, Input sources) - Contents scheduler - MDC via Network - Diagnosis (Lamp, Temperature, etc.) - Network System information - Asset management - Global Network	
Accessory	Manuals	Quick Setup Guide, Warranty Card, Application CD	Quick Setup Guide, Warranty Card, Application CD	Quick Setup Guide, Warranty Card, Application CD	
	Cables	Power Cord, D-SUB	Power Cord, D-SUB	Power Cord, D-SUB	
	Others	Remote Controller, Batteries	Remote Controller, Batteries	Remote Controller, Batteries	

* Design & Specifications are subject to change without notice.

LCD UT series

Super Narrow Video Wall Solution(Premium)

Model		460UT	460UTn	460UTn-UD	
Panel	Diagonal Size	46"	46"	46"	
	Type	S-PVA (DID)	S-PVA (DID)	S-PVA (DID)	
	Resolution	1366 X 768	1366 X 768	1366 X 768	
	Pixel Pitch	0.7455(H) X 0.7455(V)	0.7455(H) X 0.7455(V)	0.7455(H) X 0.7455(V)	
	Brightness(Typ.)	500 cd/m ² (Energysaving on)	500 cd/m ² (Energysaving on)	500 cd/m ² (Energysaving on)	
		700 cd/m ² (Energysaving off)	700 cd/m ² (Energysaving off)	700 cd/m ² (Energysaving off)	
	Contrast Ratio	3000:1	3000:1	3000:1	
	Dynamic C/R	5,000:1	5,000:1	5,000:1	
	Viewing Angle(H/M)	178/178	178/178	178/178	
	Response Time(G-to-G)	8ms	8ms	8ms	
Color Space(CIE1931)	72%	72%	72%		
Connectivity	PC inputs	VGA / DVI / BNC / PC (Support SOG)	VGA / DVI / BNC / PC (Support SOG)	VGA / DVI / BNC / PC (Support SOG)	
	Video Inputs	CVBS / Component / HDMI	CVBS / Component / HDMI	CVBS / Component / HDMI	
	PC outputs	BNC OUT	BNC OUT	BNC OUT	
	Audio outputs	STEREO L/R	STEREO L/R	STEREO L/R	
	Audio inputs	STEREO L/R	STEREO L/R	STEREO L/R	
	MDC	RS232C IN/OUT	RS232C IN/OUT	RS232C IN/OUT	
	5V OUT	0	0	0	
Power	Power Consumption	290W (max) / 270W (typ.)	360W (max) / 340W (typ.)	360W (max) / 340W (typ.)	
	Power Consumption at Stand-by	less than 2W	less than 5W	less than 5W	
	Power Consumption at Power-off	less than 1W	less than 5W	less than 5W	
	Power Supply	AC100-240 V~(+/- 10 %),50/60Hz	AC100-240 V~(+/- 10 %),50/60Hz	AC100-240 V~(+/- 10 %),50/60Hz	
Mechanical Spec	VESA Mount	600 X 400mm	600 X 400mm	600 X 400mm	
	Cabinet Color No	BKN-P824	BKN-P824	BKN-P824	
	Weight (Set/Package):kg	Normal 27.9 / 33.3	29.4 / 34.8	29.4 / 34.8	
	Protection Glass	No	No	No	
	Dimension (W/O Stand):mm	Normal 1025.7 X 579.8 X 130.0	1025.7 X 579.8 X 130.0	1025.7 X 579.8 X 130.0	
	Protection Glass	No	No	No	
	Dimension (With Stand):mm	1025.6 X 644.0 X 311.0	1025.6 X 644.0 X 311.0	1025.6 X 644.0 X 311.0	
	Packing Dimension:mm	1148.0 X 705.0 X 330.0	1148.0 X 705.0 X 330.0	1148.0 X 705.0 X 330.0	
	Bezel Width:mm	3.3	3.3	3.3	
	Protection Glass	N/A	N/A	N/A	
Operation	Operating Temperature	Normal 0°C ~ 40°C	10°C ~ 40°C	10°C ~ 40°C	
	Protection Glass	N/A	N/A	N/A	
	Humidity	10 ~ 80%	10 ~ 80%	10 ~ 80%	
	MTBF	60,000 hours	60,000 hours	60,000 hours	
Feature	Network	X	0 (MagicInfo Pro, UD)	0 (MagicInfo Pro, UD)	
	Speaker	X	X	X	
	Special Features	- Super narrow bezel - Brightness sensor - Lamp Error Detection - Temperature Sensor - Built in Fan - RS232C	- Super narrow bezel - Brightness sensor - Lamp Error Detection - Temperature Sensor - Built in Fan - RS232C	- Super narrow bezel - Brightness sensor - Brightness sensor - Lamp Error Detection - Temperature Sensor - Built in Fan - RS232C	
	Energy Star 5.0 Certified	Yes	Inapplicable	Inapplicable	
	Network	Operating System	N/A	Window XP Embedded	Window XP Embedded
		CPU		Dual-Core CPU (2.3GHz)	Dual-Core CPU (2.3GHz)
		FDM		4GB	8GB
Memory			DDR2 1GB	DDR2 1GB	
Ethernet			Gigabit LAN	Gigabit LAN	
USB			3 USB	3 USB	
VGA Out			1 VGA Out	1 VGA Out	
MagicInfo features			-Contents Play (Photo, Movie, Music, Offices, PDF, Flash, Web Page, Text, Input sources) -Contents scheduler -MDC via Network -Diagnosis (Lamp, Temperature, etc.) -Network System information -Asset management -Global Network	-Contents Play (Photo, Movie, Music, Offices, PDF, Flash, Web Page, Text, Input sources) -Contents scheduler -MDC via Network -Diagnosis (Lamp, Temperature, etc.) -Network System information -Asset management -Global Network	
Accessories		Manuals Cables Others	Quick Setup Guide, Warranty Card, Application CD D-Sub, Power Cord Remote Controller, BNC to RCA Jack, Batteries	Quick Setup Guide, Warranty Card, Application CD D-Sub, Power Cord Remote Controller, BNC to RCA Jack, Batteries	

* Design & Specifications are subject to change without notice.

LCD UX series

Video Wall Solution (Economy)

Model		400UX-2	400UXn-2	460UX-2	460UXn-2	
Panel	Diagonal Size	40"	40"	46"	46"	
	Type	S-PVA (DID)	S-PVA (DID)	S-PVA (DID)	S-PVA (DID)	
	Resolution	1920 X 1080	1920 X 1080	1920 X 1080	1920 X 1080	
	Pixel Pitch	0.46125(H) X 0.46125(W)	0.46125(H) X 0.46125(W)	0.53025(H) X 0.53025(V)	0.53025(H) X 0.53025(V)	
	Brightness(Typ.)	500 cd/m ² (Energysaving on)	500 cd/m ² (Energysaving on)	500 cd/m ² (Energysaving on)	500 cd/m ² (Energysaving on)	
		700 cd/m ² (Energysaving off)	700 cd/m ² (Energysaving off)	700 cd/m ² (Energysaving off)	700 cd/m ² (Energysaving off)	
	Contrast Ratio	3000:1	3000:1	4000:1	4000:1	
	Dynamic C/R	10000:1	10000:1	10000:1	10000:1	
	Viewing Angle(H/M)	178/178	178/178	178/178	178/178	
	Response Time(G-to-G)	8ms	8ms	8ms	8ms	
Color Space(CIE1931)	72%	72%	72%	72%		
Connectivity	PC inputs	VGA/DVI/BNC/PC/Support SOG	VGA/DVI/BNC/PC/Support SOG	VGA/DVI/BNC/PC/Support SOG	VGA/DVI/BNC/PC/Support SOG	
	Video Inputs	CVBS/Component/HDMI	CVBS/Component/HDMI	CVBS/Component/HDMI	CVBS/Component/HDMI	
	PC outputs	DVI OUT/ BNC OUT	DVI OUT/ BNC OUT	DVI OUT/ BNC OUT	DVI OUT/ BNC OUT	
	Audio outputs	STEREO JACK	STEREO JACK	STEREO JACK	STEREO JACK	
	Audio inputs	STEREO L/R(AV) JACK (PC)	STEREO L/R(AV) JACK (PC)	STEREO L/R(AV) JACK (PC)	STEREO L/R(AV) JACK (PC)	
	MDC	RS232C IN/OUT	RS232C IN/OUT	RS232C IN/OUT	RS232C IN/OUT	
	5V OUT	X	X	X	X	
Power	Power Consumption	270W (max) / 250W (typ.)	300W (max) / 280W (typ.)	320W (max) / 290W (typ.)	350W (max) / 330W (typ.)	
	Power Consumption at Stand-by	less than 2W	less than 5W	less than 2W	less than 5W	
	Power Consumption at Power-off	less than 1W	less than 5W	less than 1W	less than 5W	
	Power Supply	AC100-240 V~(+/- 10 %),50/60Hz	AC100-240 V~(+/- 10 %),50/60Hz	AC100-240 V~(+/- 10 %),50/60Hz	AC100-240 V~(+/- 10 %),50/60Hz	
Mechanical Spec	VESA Mount	600 X 400mm	600 X 400mm	600 X 400mm	600 X 400mm	
	Cabinet Color No	Black (BK26)	Black (BK26)	Black (BK26)	Black (BK26)	
	Weight (Set/Package):kg	Normal 21.2 / 25.0	22.2 / 26.0	26.7 / 31.5	27.7 / 32.5	
	Protection Glass	No	No	No	No	
	Dimension (W/O Stand):mm	Normal 914 X 526.5 X 121.5	914 X 526.5 X 121.5	1050 X 603 X 119.5	1050 X 603 X 119.5	
	Protection Glass	No	No	No	No	
	Dimension (With Stand):mm	914 X 585 X 311	914 X 585 X 311	1050 X 662 X 311	1050 X 662 X 311	
	Packing Dimension:mm	1015 X 652 X 300	1015 X 652 X 300	1155 X 733 X 325	1155 X 733 X 325	
	Bezel Width:mm	11	11	11	11	
	Protection Glass	N/A	N/A	N/A	N/A	
Operation	Operating Temperature	Normal 0°C ~ 40°C	10°C ~ 40°C	0°C ~ 40°C	10°C ~ 40°C	
	Protection Glass	N/A	N/A	N/A	N/A	
	Humidity	10 ~ 80%	10~80%	10 ~ 80%	10 ~ 80%	
	MTBF	50,000 hours	50,000 hours	50,000 hours	50,000 hours	
Feature	Network	X	0 (MagicInfo Pro, i)	X	0 (MagicInfo Pro, i)	
	Speaker	10W X 2 (Built-In)	10W X 2 (Built-In)	10W X 2 (Built-In)	10W X 2 (Built-In)	
	Special Features	- Slim bezel - Lamp Error Detection - Temperature Sensor - Built in Fan - RS232C	- Slim bezel - Lamp Error Detection - Temperature Sensor - Built in Fan - RS232C	- Slim bezel - Lamp Error Detection - Temperature Sensor - Built in Fan - RS232C	- Slim bezel - Lamp Error Detection - Temperature Sensor - Built in Fan - RS232C	
	Energy Star 5.0 Certified	Yes	Inapplicable	Yes	Inapplicable	
	Network	Operating System	N/A	Window XP Embedded	N/A	Window XP Embedded
		CPU		Dual-Core CPU (2.3GHz)		Dual-Core CPU (2.3GHz)
		FDM		4GB		4GB
Memory			DDR2 1GB		DDR2 1GB	
Ethernet			Gigabit LAN		Gigabit LAN	
USB			3 USB		3 USB	
VGA Out			1 VGA Out		1 VGA Out	
MagicInfo features			-Contents Play (Photo, Movie, Music, Offices, PDF, Flash, Web Page, Text, Input sources) -Contents scheduler -MDC via Network -Diagnosis (Lamp, Temperature, etc.) -Network System information -Asset management -Global Network		-Contents Play (Photo, Movie, Music, Offices, PDF, Flash, Web Page, Text, Input sources) -Contents scheduler -MDC via Network -Diagnosis (Lamp, Temperature, etc.) -Network System information -Asset management -Global Network	
Accessories		Manuals Cables Others	Quick Setup Guide, Warranty Card, Application CD D-Sub, Power Cord Remote Controller, BNC to RCA Jack, Batteries	Quick Setup Guide, Warranty Card, Application CD D-Sub, Power Cord Remote Controller, BNC to RCA Jack, Batteries	Quick Setup Guide, Warranty Card, Application CD D-Sub, Power Cord Remote Controller, BNC to RCA Jack, Batteries	

* Design & Specifications are subject to change without notice.

LCD DX series

24/7 Solution

Model		400DX-2	400DXn-2	460DX-2	460DXn-2
Panel	Diagonal Size	40"	40"	46"	46"
	Type	S-PVA (DID)	S-PVA (DID)	S-PVA (DID)	S-PVA (DID)
	Resolution	1920 X 1080	1920 X 1080	1920 X 1080	1920 X 1080
	Pixel Pitch	0.46125(H) X 0.46125(W)	0.46125(H) X 0.46125(W)	0.53025(H) X 0.53025(W)	0.53025(H) X 0.53025(W)
	Brightness(Typ.)	500 cd/m ² (Energysaving on) 700 cd/m ² (Energysaving off)	500 cd/m ² (Energysaving on) 700 cd/m ² (Energysaving off)	500 cd/m ² (Energysaving on) 700 cd/m ² (Energysaving off)	500 cd/m ² (Energysaving on) 700 cd/m ² (Energysaving off)
	Contrast Ratio	3000:1	3000:1	4000:1	4000:1
	Dynamic C/R	10000:1	10000:1	10000:1	10000:1
	Viewing Angle(H/V)	178/178	178/178	178/178	178/178
	Response Time(G-to-G)	8ms	8ms	8ms	8ms
	Color Space(CIE1931)	72%	72%	72%	72%
Connectivity	PC inputs	VGA/DVI/BNC/PC(Support SOG)	VGA/DVI/BNC/PC(Support SOG)	VGA/DVI/BNC/PC(Support SOG)	VGA/DVI/BNC/PC(Support SOG)
	Video Inputs	CVBS/Component/HDMI	CVBS/Component/HDMI	CVBS/Component/HDMI	CVBS/Component/HDMI
	PC outputs	BNC OUT/DVI OUT	BNC OUT/DVI OUT	BNC OUT/DVI OUT	BNC OUT/DVI OUT
	Audio outputs	STEREO JACK	STEREO JACK	STEREO JACK	STEREO JACK
	Audio inputs	STEREO L/R(AV) JACK (PC)	STEREO L/R(AV) JACK (PC)	STEREO L/R(AV) JACK (PC)	STEREO L/R(AV) JACK (PC)
	MDC	RS232C IN/OUT	RS232C IN/OUT	RS232C IN/OUT	RS232C IN/OUT
	5V OUT	X	X	X	X
Power	Power Consumption	270W (max) / 250W (typ.)	300W (max) / 280W (typ.)	320W (Max) / 290W (Typ.)	350W (max) / 330W (typ.)
	Power Consumption at Stand-by	less than 2W	less than 5W	less than 2W	less than 5W
	Power Consumption at Power-off	less than 1W	less than 5W	less than 1W	less than 5W
	Power Supply	AC100-240 V~(+/- 10 %), 50/60Hz	AC100-240 V~(+/- 10 %), 50/60Hz	AC100-240 V~(+/- 10 %), 50/60Hz	AC100-240 V~(+/- 10 %), 50/60Hz
Mechanical Spec	VESA Mount	600 X 400mm	600 X 400mm	600 X 400mm	600 X 400mm
	Cabinet Color No	Silver (GR504 / GR-806P) Black (BK07)	Silver (GR504 / GR-806P) Black (BK07)	Silver (GR504 / GR-806P) Black (BK07)	Silver (GR504 / GR-806P) Black (BK07)
	Weight (Set/Package):kg	Normal 22.0 / 26.5	23.0 / 27.5	28.0 / 32.0	29.0 / 33.0
		Protection Glass 25.5 / 30	26.5 / 31	31.4 / 35.4	32.4 / 36.4
	Dimension (W/O Stand):mm	Normal 932 X 548 X 130	932 X 548 X 130	1068 X 624 X 130	1068 X 624 X 130
		Protection Glass 932 X 548 X 136	932 X 548 X 136	1068 X 624 X 136	1068 X 624 X 136
	Dimension (With Stand):mm	932 X 604 X 311	932 X 604 X 311	1068 X 681 X 311	1068 X 681 X 311
	Packing Dimension:mm	1043 X 667 X 311	1043 X 667 X 311	1190 X 763 X 305	1190 X 763 X 305
	Bezel Width:mm	20	20	20	20
	Protection Glass	Optional	Optional	Optional	Optional
Operation	Operating Temperature	Normal 0°C ~ 40°C	10°C ~ 40°C	0°C ~ 40°C	10°C ~ 40°C
		Protection Glass 0°C ~ 35°C	10°C ~ 35°C	0°C ~ 35°C	10°C ~ 35°C
	Humidity	10 ~ 80%	10 ~ 80%	10 ~ 80%	10 ~ 80%
	MTBF	50,000 hours	50,000 hours	50,000 hours	50,000 hours
Feature	Network	X	0 (MagicInfo total)	X	0 (MagicInfo Pro)
	Speaker	10W X 2 (Built-In)	10W X 2 (Built-In)	10W X 2 (Built-In)	10W X 2 (Built-In)
	Special Features	- Lamp Error Detection - Brightness Sensor - Temperature Sensor - Built in Fan - RS232C - Built in Speaker - Digital Loop out - PIP / PBP	- Lamp Error Detection - Brightness Sensor - Temperature Sensor - Built in Fan - RS232C - Built in Speaker - Digital Loop out - PIP / PBP	- Lamp Error Detection - Brightness Sensor - Temperature Sensor - Built in Fan - RS232C - Built in Speaker - Digital Loop out - PIP / PBP	- Lamp Error Detection - Brightness Sensor - Temperature Sensor - Built in Fan - RS232C - Built in Speaker - Digital Loop out - PIP / PBP
	Energy Star 5.0 Certified	Yes	Inapplicable	Yes	Inapplicable
Network	Operating System	N/A	Window XP Embedded	N/A	Window XP Embedded
	CPU		Dual-Core CPU (2.3GHz)		Dual-Core CPU (2.3GHz)
	FDM		HDD 40GB		HDD 40GB
	Memory		DDR2 1GB		DDR2 1GB
	Ethernet		Gigabit LAN		Gigabit LAN
	USB		4 USB		4 USB
	VGA Out		N/A		N/A
	MagicInfo features		-Contents Play (Photo, Movie, Music, Offices, PDF, Flash, Web Page, Text, Input sources) -Contents scheduler -MDC via Network -Diagnosis (Lamp, Temperature, Fan, etc.) -Network System information -Asset management -Global Network		-Contents Play (Photo, Movie, Music, Offices, PDF, Flash, Web Page, Text, Input sources) -Contents scheduler -MDC via Network -Diagnosis (Lamp, Temperature, Fan, etc.) -Network System information -Asset management -Global Network
Accessories	Manuals	Quick Setup Guide, Warranty Card, Application CD	Quick Setup Guide, Warranty Card, Application CD	Quick Setup Guide, Warranty Card, Application CD	Quick Setup Guide, Warranty Card, Application CD
	Cables	D-Sub, Power Cord	D-Sub, Power Cord	D-Sub, Power Cord	D-Sub, Power Cord
	Others	Remote Controller, Batteries , BNC to RCA Jack	Remote Controller, Batteries , BNC to RCA Jack	Remote Controller, Batteries , BNC to RCA Jack	Remote Controller, Batteries , BNC to RCA Jack

* Design & Specifications are subject to change without notice.

Model		520DX	520DXn
Panel	Diagonal Size	52"	52"
	Type	S-PVA (DID)	S-PVA (DID)
	Resolution	1920 X 1080	1920 X 1080
	Pixel Pitch	0.6 X 0.6	0.6 X 0.6
	Brightness(Typ.)	500 cd/m ² (Energysaving on) 700 cd/m ² (Energysaving off)	500 cd/m ² (Energysaving on) 700 cd/m ² (Energysaving off)
	Contrast Ratio	2000:1	2000:1
	Dynamic C/R	5000:1	5000:1
	Viewing Angle(H/V)	178/178	178/178
	Response Time(G-to-G)	8ms	8ms
	Color Space(CIE1931)	72%	72%
Connectivity	PC inputs	VGA/DVI/BNC/PC(Support SOG)	VGA/DVI/BNC/PC(Support SOG)
	Video Inputs	CVBS/Component/HDMI	CVBS/Component/HDMI
	PC outputs	BNC OUT	BNC OUT
	Audio outputs	STEREO L/R	STEREO L/R
	Audio inputs	STEREO L/R	STEREO L/R
	MDC	RS232C IN/OUT	RS232C IN/OUT
	5V OUT	0	0
Power	Power Consumption	386W (max) / 310W (typ.)	456W (max) / 380W (typ.)
	Power Consumption at Stand-by	less than 2W	less than 5W
	Power Consumption at Power-off	less than 1W	less than 5W
	Power Supply	AC100-240 V~(+/- 10 %), 50/60Hz	AC100-240 V~(+/- 10 %), 50/60Hz
Mechanical Spec	VESA Mount	800 X 400 mm	800 X 400 mm
	Cabinet Color No	Silver (GR504 / GR-806P) Black (BK07)	Silver (GR504 / GR-806P) Black (BK07)
	Weight (Set/Package):kg	Normal 36.8/47	37.4/47.6
		Protection Glass 44.8/55	45.4/55.6
	Dimension (W/O Stand):mm	Normal 1211 X 713 X 137.1	1211 X 713 X 137.1
		Protection Glass 1224 X 720 X 141	1224 X 720 X 141
	Dimension (With Stand):mm	1211 X 776.6 X 311	1211 X 776.6 X 311
	Packing Dimension:mm	1338 X 845 X 355	1338 X 845 X 355
	Bezel Width:mm	22	22
	Protection Glass	Optional	Optional
Operation	Operating Temperature	Normal 0°C ~ 40°C	10°C ~ 40°C
		Protection Glass 0°C ~ 35°C	10°C ~ 35°C
	Humidity	10 ~ 80%	10 ~ 80%
	MTBF	50,000 hours	50,000 hours
Feature	Network	X	0 (MagicInfo Pro)
	Speaker	10W X 2 (Built-In)	10W X 2 (Built-In)
	Special Features	- Lamp Error Detection - Temperature Sensor - Built in Fan - BNC In/Out - RS232C - Built in speaker	- Lamp Error Detection - Temperature Sensor - Built in Fan - BNC In/Out - RS232C - Built in speaker
	Energy Star 5.0 Certified	Yes	Inapplicable
Network	Operating System	N/A	Window XP Embedded
	CPU		Dual-Core CPU (2.3GHz)
	FDM		4GB
	Memory		DDR2 1GB
	Ethernet		Gigabit LAN
	USB		3 USB
	VGA Out		1 VGA Out
	MagicInfo features		-Contents Play (Photo, Movie, Music, Offices, PDF, Flash, Web Page, Text, Input sources) -Contents scheduler -MDC via Network -Diagnosis (Lamp, Temperature, etc.) -Network System information -Asset management -Global Network
Accessories	Manuals	Quick Setup Guide, Warranty Card, Application CD	Quick Setup Guide, Warranty Card, Application CD
	Cables	D-Sub, Power Cord	D-Sub, Power Cord
	Others	Remote Controller, BNC to RCA Jack, Batteries, HDD Cover	Remote Controller, BNC to RCA Jack, Batteries, HDD Cover

* Design & Specifications are subject to change without notice.

LCD DX series

24/7 Solution

LCD CX series

Multi Function (LFD + TV)

Model		700DX-2	700DXn-2	820DXn-2	
Panel	Diagonal Size	70"	70"	82"	
	Type	S-PVA (DID)	S-PVA (DID)	S-PVA (DID)	
	Resolution	1920 X 1080	1920 X 1080	1920 X 1080	
	Pixel Pitch	0.807(H) X 0.807(V)	0.807(H) X 0.807(V)	0.9405(H) X 0.9405(V)	
	Brightness(Typ.)	600cd/m ²	600cd/m ²	600cd/m ²	
	Contrast Ratio	2000:1	2000:1	2000:1	
	Dynamic C/R	2500:1	2500:1	2500:1	
	Viewing Angle(H/V)	178/178	178/178	178/178	
	Response Time(G-to-G)	8ms	8ms	8ms	
	Color Space(CIE1931)	72%	72%	72%	
Connectivity	PC inputs	VGA/DVI/BNC/PC(Support SOG)	VGA/DVI/BNC/PC(Support SOG)	VGA/DVI/BNC/PC(Support SOG)	
	Video inputs	CVBS/COMPONENT/HDMI	CVBS/COMPONENT/HDMI	CVBS/COMPONENT/HDMI	
	PC outputs	DVI OUT/ BNC OUT	DVI OUT/ BNC OUT	DVI OUT/ BNC OUT	
	Audio outputs	STEREO JACK	STEREO JACK	STEREO JACK	
	Audio inputs	STEREO L/R(AV) JACK (PC)	STEREO L/R(AV) JACK (PC)	STEREO L/R(AV) JACK (PC)	
	MDC	RS232C IN/OUT	RS232C IN/OUT	RS232C IN/OUT	
	5V OUT	X	X	X	
	Power	Power Consumption	720W (Max) / 680W (Typ.)	790W (Max) / 750W (Typ.)	1kW (Max) / 930 (Typ.)
		Power Consumption at Stand-by	less than 2W	less than 5W	less than 5W
		Power Consumption at Power-off	less than 1W	less than 5W	less than 5W
Power Supply		AC 100 - 240 V~ (+/- 10 %), 50/60 Hz	AC 100 - 240 V~ (+/- 10 %), 50/60 Hz	AC 100 - 240 V~ (+/- 10 %), 50/60 Hz	
Mechanical Spec	VESA Mount	800 X 400mm	800 X 400mm	1400 X 800, 900 X 800mm	
	Cabinet Color No	Silver (TBD)	Silver (TBD)	Silver (TBD)	
	Weight (Set/Package):kg	Normal	81.7 / 102.7	83 / 104	119 / 154
		Protection Glass			135 / 170
	Dimension (W/O Stand):mm	Normal	1668 X 989 X 138	1668 X 989 X 138	1915 X 1126 X 143
		Protection Glass	1668 X 989 X 142	1668 X 989 X 142	1915 X 1126 X 151
	Dimension (With Stand):mm	Normal	1668 X 1094 X 500	1668 X 1094 X 500	1915 X 1230 X 500
		Protection Glass	1825 X 1353 X 610	1825 X 1353 X 610	2095 X 1488 X 618
	Packing Dimension:mm	1825 X 1353 X 610	1825 X 1353 X 610	2095 X 1488 X 618	
	Bezel Width:mm	55	55	55	
Protection Glass	Optional	Optional	Optional		
Operation	Operating Temperature	Normal	0°C ~ 40°C	10°C ~ 40°C	
		Protection Glass	10°C ~ 35°C	10°C ~ 35°C	
	Humidity	10 ~ 80%	10 ~ 80%	10 ~ 80%	
	MTBF	50,000 hours	50,000 hours	50,000 hours	
Feature	Network	X	0 (MagicInfo total)	0 (MagicInfo total)	
	Speaker	15W X 2 (built-in)	15W X 2 (built-in)	15W X 2 (built-in)	
	Special Features	- Lamp Error Detection	- Lamp Error Detection	- Lamp Error Detection	- Lamp Error Detection
		- Brightness Sensor	- Brightness Sensor	- Brightness Sensor	- Brightness Sensor
		- Temperature Sensor	- Temperature Sensor	- Temperature Sensor	- Temperature Sensor
		- Built in Fan	- Built in Fan	- Built in Fan	- Built in Fan
		- RS232C	- RS232C	- RS232C	- RS232C
		- Built in Speaker	- Built in Speaker	- Built in Speaker	- Built in Speaker
		- Digital Loop out	- Digital Loop out	- Digital Loop out	- Digital Loop out
		- PIP / PBP	- PIP / PBP	- PIP / PBP	- PIP / PBP
Energy Star 5.0 Certified		Inapplicable	Inapplicable	Inapplicable	
Network		Operating System	N/A	Window XP Embedded	Window XP Embedded
	CPU		Dual-Core CPU (2.3GHz)	Dual-Core CPU (2.3GHz)	
	FDM		40GB	40GB	
	Memory		DDR2 1GB	DDR2 1GB	
	Ethernet		Gigabit LAN	Gigabit LAN	
	USB		4 USB	4 USB	
	VGA Out		N/A	N/A	
	MagicInfo features	-Contents Play (Photo, Movie, Music, Offices, PDF, Flash, Web Page, Text, Input sources)	-Contents Play (Photo, Movie, Music, Offices, PDF, Flash, Web Page, Text, Input sources)	-Contents Play (Photo, Movie, Music, Offices, PDF, Flash, Web Page, Text, Input sources)	-Contents Play (Photo, Movie, Music, Offices, PDF, Flash, Web Page, Text, Input sources)
		-Contents scheduler	-Contents scheduler	-Contents scheduler	-Contents scheduler
		-MDC via Network	-MDC via Network	-MDC via Network	-MDC via Network
-Diagnosis (Lamp, Temperature, Fan, etc.)		-Diagnosis (Lamp, Temperature, Fan, etc.)	-Diagnosis (Lamp, Temperature, Fan, etc.)	-Diagnosis (Lamp, Temperature, Fan, etc.)	
-Network System information		-Network System information	-Network System information	-Network System information	
-Asset management		-Asset management	-Asset management	-Asset management	
-Global Network		-Global Network	-Global Network	-Global Network	
Accessories	Manuals	Quick Setup Guide, Warranty Card, Application CD	Quick Setup Guide, Warranty Card, Application CD	Quick Setup Guide, Warranty Card, Application CD	
	Cables	D-Sub, Power Cord	D-Sub, Power Cord	D-Sub, Power Cord	
	Others	Remote Controller, BNC to RCA Jack, Batteries	Remote Controller, BNC to RCA Jack, Batteries	Remote Controller, BNC to RCA Jack, Batteries	

* Design & Specifications are subject to change without notice.

Model		400CX-2	400CXn-2	460CX-2	460CXn-2	
Panel	Diagonal Size	40"	40"	46"	46"	
	Type	S-PVA	S-PVA	S-PVA	S-PVA	
	Resolution	1920 X 1080	1920 X 1080	1920 X 1080	1920 X 1080	
	Pixel Pitch	0.461(H) X 0.461(W)	0.461(H) X 0.461(W)	0.53025(H) X 0.53025(V)	0.53025(H) X 0.53025(V)	
	Brightness(Typ.)	450cd/m ²	450cd/m ²	450cd/m ²	450cd/m ²	
	Contrast Ratio	4000:1	4000:1	4000:1	4000:1	
	Dynamic C/R	10,000:1	10,000:1	10,000:1	10,000:1	
	Viewing Angle(H/V)	178/178	178/178	178/178	178/178	
	Response Time(G-to-G)	8ms	8ms	8ms	8ms	
	Color Space(CIE1931)	72%	72%	72%	72%	
Connectivity	PC inputs	VGA/DVI/PC (Support SOG)	VGA/DVI/PC (Support SOG)	VGA/DVI/PC (Support SOG)	VGA/DVI/PC (Support SOG)	
	Video inputs	CVBS/HDMI/DTV	CVBS/HDMI/DTV	CVBS/HDMI/DTV	CVBS/HDMI/DTV	
	PC outputs	DVI out	DVI out	DVI out	DVI out	
	Audio outputs	STEREO JACK	STEREO JACK	STEREO JACK	STEREO JACK	
	Audio inputs	STEREO L/R(AV) JACK (PC)	STEREO L/R(AV) JACK (PC)	STEREO L/R(AV) JACK (PC)	STEREO L/R(AV) JACK (PC)	
	MDC	RS232C IN/OUT	RS232C IN/OUT	RS232C IN/OUT	RS232C IN/OUT	
	5V OUT	X	X	X	X	
	Power	Power Consumption	240 (max) / 200W (typ.)	290 (max) / 260W (typ.)	280W (max) / 250W (typ.)	330W (max) / 310W (typ.)
		Power Consumption at Stand-by	less than 2W	less than 5W	less than 2W	less than 5W
		Power Consumption at Power-off	less than 1W	less than 5W	less than 1W	less than 5W
Power Supply		AC100-240 V~(+/- 10 %), 50/60Hz	AC100-240 V~(+/- 10 %), 50/60Hz	AC100-240 V~(+/- 10 %), 50/60Hz	AC100-240 V~(+/- 10 %), 50/60Hz	
Mechanical Spec	VESA Mount	600 X 400mm	600 X 400mm	600 X 400mm	600 X 400mm	
	Cabinet Color No	Glossy Black	Glossy Black	Glossy Black	Glossy Black	
	Weight (Set/Package):kg	Normal	19.6 / 24.7	21.0 / 26.1	25.6 / 31.6	27.0 / 33.0
		Protection Glass	No	No	No	No
	Dimension (W/O Stand):mm	Normal	971 X 582 X 119	971 X 582 X 119	1102 X 658 X 125.5	1102 X 658 X 125.5
		Protection Glass	No	No	No	No
	Dimension (With Stand):mm	971 X 641.5 X 311	971 X 641.5 X 311	1102 X 719 X 311	1102 X 719 X 311	
	Packing Dimension:mm	1085 X 703 X 310	1085 X 703 X 310	1220 X 780 X 310	1220 X 780 X 310	
	Bezel Width:mm	40.0	40.0	40.0	40.0	
	Protection Glass	Optional	Optional	Optional	Optional	
Operation	Operating Temperature	Normal	0°C ~ 40°C	10°C ~ 40°C	0°C ~ 40°C	
		Protection Glass	0°C ~ 35°C	10°C ~ 35°C	0°C ~ 35°C	
	Humidity	10 ~ 80%	10 ~ 80%	10 ~ 80%	10 ~ 80%	
	MTBF	50,000 hours	50,000 hours	50,000 hours	50,000 hours	
Feature	Network	X	0 (MagicInfo Pro)	X	0 (MagicInfo Pro)	
	Speaker	10W X 2 (built-in)	10W X 2 (built-in)	10W X 2 (built-in)	10W X 2 (built-in)	
	Special Features	- Built in Tuner	- Built in Tuner	- Built in Tuner	- Built in Tuner	
		- Lamp Error Detection	- Lamp Error Detection	- Lamp Error Detection	- Lamp Error Detection	
		- Temperature Sensor	- Temperature Sensor	- Temperature Sensor	- Temperature Sensor	
		- Brightness Sensor	- Brightness Sensor	- Brightness Sensor	- Brightness Sensor	
		- Built in Fan	- Built in Fan	- Built in Fan	- Built in Fan	
		- Video Wall	- Video Wall	- Video Wall	- Video Wall	
		- Built in Speaker	- Built in Speaker	- Built in Speaker	- Built in Speaker	
		- RS232C	- RS232C	- RS232C	- RS232C	
- Digital Loop out		- Digital Loop out	- Digital Loop out	- Digital Loop out		
- PIP / PBP		- PIP / PBP	- PIP / PBP	- PIP / PBP		
Energy Star 5.0 Certified	Yes	Inapplicable	Yes	Inapplicable		
Network	Operating System	N/A	Window XP Embedded	N/A	Window XP Embedded	
	CPU		Dual-Core CPU (2.3GHz)		Dual-Core CPU (2.3GHz)	
	FDM		4GB		4GB	
	Memory		DDR2 1GB		DDR2 1GB	
	Ethernet		Gigabit LAN		Gigabit LAN	
	USB		3 USB		3 USB	
	VGA Out		1 VGA Out		1 VGA Out	
	MagicInfo features	-Contents Play (Photo, Movie, Music, Offices, PDF, Flash, Web Page, Text, Input sources)	-Contents Play (Photo, Movie, Music, Offices, PDF, Flash, Web Page, Text, Input sources)	-Contents Play (Photo, Movie, Music, Offices, PDF, Flash, Web Page, Text, Input sources)	-Contents Play (Photo, Movie, Music, Offices, PDF, Flash, Web Page, Text, Input sources)	
		-Contents scheduler	-Contents scheduler	-Contents scheduler	-Contents scheduler	
		-MDC via Network	-MDC via Network	-MDC via Network	-MDC via Network	
-Diagnosis (Lamp, Temperature, Fan, etc.)		-Diagnosis (Lamp, Temperature, Fan, etc.)	-Diagnosis (Lamp, Temperature, Fan, etc.)	-Diagnosis (Lamp, Temperature, Fan, etc.)		
-Network System information		-Network System information	-Network System information	-Network System information		
-Asset management		-Asset management	-Asset management	-Asset management		
-Global Network		-Global Network	-Global Network	-Global Network		
Accessories	Manuals	Quick Setup Guide, Warranty Card, Application CD	Quick Setup Guide, Warranty Card, Application CD	Quick Setup Guide, Warranty Card, Application CD	Quick Setup Guide, Warranty Card, Application CD	
	Cables	D-Sub, Power Cord	D-Sub, Power Cord	D-Sub, Power Cord	D-Sub, Power Cord	
	Others	Remote Controller, Batteries	Remote Controller, Batteries	Remote Controller, Batteries	Remote Controller, Batteries	

* Design & Specifications are subject to change without notice.

LCD MX(FP) series

Economical Solution

Model		230MXn	320MX-2 (MP-2)	320MXn-2 (MPn-2)	400MX (FP-2)	
Panel	Diagonal Size	23"	32" (16.9)	32" (16.9)	40"	
	Type	C-PVA	S-PVA	S-PVA	S-PVA	
	Resolution	1920 X 1080	1366 X 768	1366 X 768	1920x1080	
	Pixel Pitch	0.2566(H) X 0.2566(V)	0.511(H) X 0.511(W)	0.511(H) X 0.511(W)	0.461(H) X 0.461(W)	
	Brightness(Typ.)	300cd/m ²	450cd/m ²	450cd/m ²	450cd/m ²	
	Contrast Ratio	3000:1	4000:1	4000:1	4000:1	
	Dynamic C/R	5000:1	10,000:1	10,000:1	40,000:1	
	Viewing Angle(H/V)	178/178	178/178	178/178	178/178	
	Response Time(G-to-G)	8ms	8ms	8ms	8ms	
	Color Space(CIE1931)	72%	72%	72%	72%	
Connectivity	PC inputs	VGA (SOG) / HDMI	VGA/DVI/PC (Support SOG)	VGA/DVI/PC (Support SOG)	VGA/DVI/PC (Support SOG)	
	Video inputs	HDMI	CVBS/HDMI	CVBS/HDMI	CVBS/HDMI	
	PC outputs	VGA	X	X	X	
	Audio outputs	STEREO JACK	STEREO L/R(AV) JACK (PC)	STEREO L/R(AV) JACK (PC)	STEREO L/R(AV) JACK (PC)	
	Audio inputs	STEREO L/R(AV) JACK (PC)	STEREO L/R	STEREO L/R	STEREO L/R	
	MDC	RS232C IN/OUT	RS232C IN/OUT	RS232C IN/OUT	RS232C IN/OUT	
	5V OUT	X	0	0	0	
	Power	Power Consumption	120W (MAX)	143W (max) / 140W (typ.)	220W (max) / 200W (typ.)	220W (max) / 180W (typ.)
Power Consumption at Stand-by	less than 5W	less than 2W	less than 5W	less than 2W		
Power Consumption at Power-off	less than 5W	less than 1W	less than 5W	less than 1W		
Power Supply	AC100-240 V~(+/- 10 %), 50/60Hz	AC100-240 V~(+/- 10 %), 50/60Hz	AC100-240 V~(+/- 10 %), 50/60Hz	AC100-240 V~(+/- 10 %), 50/60Hz		
Mechanical Spec	VESA Mount	100 X 100mm	200 X 200mm	200 X 200mm	600 X 400mm	
	Cabinet Color No	Black	Black (BK26)	Black (BK26)	Black (BK26)	
	Weight (Set/Package):kg	Normal	7.0	13.7/16.7	15.1/18.1	19.0/22.5
		Protection Glass	8.6	No	No	24.5/28.0
	Dimension (W/O Stand):mm	Normal	557.5 X 339.0 X 73.9	780 X 482 X 109	780 X 482 X 109	971 X 582.0 X 118.5
		Protection Glass	N/A	No	No	971 X 582.0 X 124.5
	Dimension (With Stand):mm	N/A	780 X 545 X 311	780 X 545 X 311	971 X 643 X 311	
	Packing Dimension:mm	640.0 X 418.0 X 192.0	890 X 590 X 256	890 X 590 X 256	1085 X 703 X 310	
	Bezel Width:mm	40	40	40	40	
	Protection Glass	N/A	Optional	Optional	Optional	
Operation	Operating Temperature	Normal	10°C ~ 40°C	10°C ~ 40°C	0°C ~ 40°C	
		Protection Glass	N/A	0°C ~ 35°C	10°C ~ 35°C	10°C ~ 35°C
	Humidity	10 ~ 80%	10 ~ 80%	10 ~ 80%	10 ~ 80%	
	MTBF	40,000 hours	50,000 hours	50,000 hours	50,000 hours	
Feature	Network	0 (MagicInfo Pro.)	X	0 (MagicInfo total)	X	
	Speaker	3W X 2 (built-in)	5W X 2 (built-in)	5W X 2 (built-in)	10W X 2 (built-in)	
	Special Features	- Lamp Error Detection	- Lamp Error Detection	- Lamp Error Detection	- Lamp Error Detection	
		- Temperature Sensor	- Temperature Sensor	- Temperature Sensor	- Temperature Sensor	
		- Brightness Sensor	- Built in Fan	- Built in Fan	- Built in Fan	
		- Built in Fan	- Video Wall	- Video Wall	- Video Wall	
		- RS232C	- RS232C	- RS232C	- RS232C*	
Energy Star 5.0 Certified	Inapplicable	Yes	Inapplicable	Yes		
Network	Operating System	Windows XP Embedded Standard	Network Support with SBB	Window XP Embedded	Network Support with SBB	
	CPU	Dual-Core CPU (2.3GHz)		Dual-Core CPU (2.3GHz)		
	FDM	HDD 40GB		4GB, 8GB (LH46MGTBPC/XJ)		
	Memory	SEC DDR2 1GB		SEC DDR2 1GB		
	Ethernet	Marvell 88E8055 Gigabit LAN		Marvell 88E8055 Gigabit LAN		
	USB	4 USBs		3 USB		
	VGA Out	N/A		1 VGA Out		
	MagicInfo features	-Contents Play (Photo, Movie, Music, Offices, PDF, Flash, Web Page, Text, Input sources)		-Contents Play(Photo, Movie, Music, Offices, PDF, Flash, Web Page, Text, Input sources)		
		-Contents scheduler		-Contents scheduler		
		-MDC via Network		-MDC via Network		
		-Diagnosis (Lamp, Temperature, etc.)		-Diagnosis (Lamp, Temperature, etc.)		
		-Network System information		-Network System information		
		-Asset management		-Asset management		
		-Global Network		-Global Network		
Accessories	Manuals	Quick Setup Guide, Warranty Card, Application CD	Quick Setup Guide, Warranty Card, Application CD	Quick Setup Guide, Warranty Card, Application CD	Quick Setup Guide, Warranty Card, Application CD	
Cables	Power Cord	D-Sub, Power Cord	D-Sub, Power Cord	D-Sub, Power Cord	D-Sub, Power Cord	
Others	Remote Controller, Batteries	Remote Controller, Batteries	Remote Controller, Batteries	Remote Controller, Batteries	Remote Controller, Batteries	

* Design & Specifications are subject to change without notice. * BNC(in/out) & Component are added to MP / FP model (USA only)

Model		400MXn-2 (FPn-2)	460MX-2 (FP-2)	460MXn-2 (FPn-2)	650MP (FP)	
Panel	Diagonal Size	40"	46"	46"	65"	
	Type	S-PVA	S-PVA	S-PVA	AM/3	
	Resolution	1920 X 1080	1920 X 1080	1920 X 1080	1920 X 1080	
	Pixel Pitch	0.461(H) X 0.461(W)	0.53025(H) X 0.53025(V)	0.53025(H) X 0.53025(V)	0.744 X 0.744	
	Brightness(Typ.)	450cd/m ²	450cd/m ²	450cd/m ²	510cd/m ²	
	Contrast Ratio	4000:1	4000:1	4000:1	5000:1	
	Dynamic C/R	40,000:1	40,000:1	40,000:1	10,000:1	
	Viewing Angle(H/V)	178/178	178/178	178/178	178/178	
	Response Time(G-to-G)	8ms	8ms	8ms	5.5ms	
	Color Space(CIE1931)	72%	72%	72%	72%	
Connectivity	PC inputs	VGA/DVI/PC (Support SOG)	VGA/DVI/PC (Support SOG)	VGA/DVI/PC (Support SOG)	VGA/DVI/BNC/PC (Support SOG)	
	Video inputs	CVBS / HDMI	CVBS / HDMI	CVBS / HDMI	CVBS / Component / HDMI	
	PC outputs	X	X	X	BNC OUT/ DVI OUT	
	Audio outputs	STEREO L/R(AV) JACK (PC)	STEREO L/R(AV) JACK (PC)	STEREO L/R(AV) JACK (PC)	STEREO JACK	
	Audio inputs	STEREO L/R	STEREO L/R	STEREO L/R	STEREO L/R(AV) JACK (PC)	
	MDC	RS232C IN/OUT	RS232C IN/OUT	RS232C IN/OUT	RS232C IN/OUT	
	5V OUT	0	0	0	X	
	Power	Power Consumption	290W (max) / 228W (typ.)	260W (max) / 240W (typ.)	330W (max) / 310W (typ.)	470W (max) / 430W (typ.)
Power Consumption at Stand-by	less than 5W	less than 2W	less than 5W	less than 2W		
Power Consumption at Power-off	less than 5W	less than 1W	less than 5W	less than 1W		
Power Supply	AC100-240 V~(+/- 10 %), 50/60Hz	AC100-240 V~(+/- 10 %), 50/60Hz	AC100-240 V~(+/- 10 %), 50/60Hz	AC100-240 V~(+/- 10 %), 50/60Hz		
Mechanical Spec	VESA Mount	600 X 400mm	600 X 400mm	600 X 400mm	600 X 400mm	
	Cabinet Color No	Black (BK26)	Black (BK26)	Black (BK26)	Black (BK26)	
	Weight (Set/Package):kg	Normal	20.4 / 23.9	27.0 / 33.0	27.0 / 33.0	58 / 67.4
		Protection Glass	25.9 / 29.4	32.0 / 38.0	32.0 / 38.0	TBD
	Dimension (W/O Stand):mm	Normal	971 X 582.0 X 118.5	1102 X 658 X 125.5	1102 X 658 X 125.5	1554 X 924 X 123.9
		Protection Glass	971 X 582.0 X 124.5	1102 X 658 X 131.5	1102 X 658 X 131.5	TBD
	Dimension (With Stand):mm	971 X 643 X 311	1102 X 719 X 311	1102 X 719 X 311	1554 X 1029 X 500	
	Packing Dimension:mm	1085 X 703 X 310	1220 X 780 X 310	1220 X 780 X 310	1690 X 1060 X 450	
	Bezel Width:mm	40	40	40	54	
	Protection Glass	Optional	Optional	Optional	TBD	
Operation	Operating Temperature	Normal	10°C ~ 40°C	10°C ~ 40°C	10°C ~ 40°C	
		Protection Glass	10°C ~ 35°C	10°C ~ 35°C	10°C ~ 35°C	TBD
	Humidity	10 ~ 80%	10 ~ 80%	10 ~ 80%	10 ~ 80%	
	MTBF	50,000 hours	50,000 hours	50,000 hours	50,000 hours	
Feature	Network	0 (MagicInfo total)	X	0 (MagicInfo total)	0 (MagicInfo total)	
	Speaker	10W X 2 (built-in)	10W X 2 (built-in)	10W X 2 (built-in)	15W X 2 (built-in)	
	Special Features	- Lamp Error Detection	- Lamp Error Detection	- Lamp Error Detection	- Lamp Error Detection	- Brightness sensor
		- Temperature Sensor	- Temperature Sensor	- Temperature Sensor	- Temperature Sensor	- Lamp Error Detection
		- Built in Fan	- Built in Fan	- Built in Fan	- Built in Fan	- Temperature Sensor
		- Video Wall	- Video Wall	- Video Wall	- Video Wall	- Built in Fan
		- RS232C	- RS232C	- RS232C	- RS232C	- Video Wall
						- BNC in/out
Energy Star 5.0 Certified	Inapplicable	Yes	Inapplicable	Yes		
Network	Operating System	Window XP Embedded	Network Support with SBB	Window XP Embedded	slide-in type	
	CPU	Dual-Core CPU (2.3GHz)		Dual-Core CPU (2.3GHz)		
	FDM	4GB, 8GB (LH46MGTBPC/XJ)		4GB, 8GB (LH46MGTBPC/XJ)		
	Memory	DDR2 1GB		DDR2 1GB		
	Ethernet	Gigabit LAN		Gigabit LAN		
	USB	3 USB		3 USB		
	VGA Out	1 VGA Out		1 VGA Out		
	MagicInfo features	Realtek ALC262		Realtek ALC262		
		-Contents Play (Photo, Movie, Music, Offices, PDF, Flash, Web Page, Text, Input sources)		-Contents Play (Photo, Movie, Music, Offices, PDF, Flash, Web Page, Text, Input sources)		
		-Contents scheduler		-Contents scheduler		
		-MDC via Network		-MDC via Network		
		-Diagnosis (Lamp, Temperature, etc.)		-Diagnosis (Lamp, Temperature, etc.)		
		-Network System information		-Network System information		
		-Asset management		-Asset management		
		-Global Network		-Global Network		
Accessories	Manuals	Quick Setup Guide, Warranty Card, Application CD	Quick Setup Guide, Warranty Card, Application CD	Quick Setup Guide, Warranty Card, Application CD	Quick Setup Guide, Warranty Card, Application CD	
Cables	Power Cord	Power Cord	Power Cord	Power Cord	D-Sub, Power Cord	
Others	Remote Controller, Batteries	Remote Controller, Batteries	Remote Controller, Batteries	Remote Controller, Batteries	Remote Controller, Batteries	

* Design & Specifications are subject to change without notice.

PDP P series

Economical Solution

Model		P50HP	P50FP	P63FP	
Panel	Diagonal Size	50"	50"	63"	
	Type	Plasma	Plasma	Plasma	
	Resolution	1365 X 768	1920 X 1080	1920 X 1080	
	Pixel Pitch	0.81(H) X 0.81(V)	0.576(H) X 0.576(V)	0.726(H) X 0.726(V)	
	Brightness(Typ.)	1,500nits	1,300nits	1,500nits	
	Contrast Ratio	10,000:1	40,000:1	40,000:1	
	Dynamic C/R	N/A	N/A	N/A	
	Viewing Angle(H/M)	Over 160/160	Over 160/160	Over 160/160	
	Response Time(G-to-G)	N/A	N/A	N/A	
	Color Space(CIE1931)				
Connectivity	PC inputs	VGA (SOG) / DVI/BNC	VGA (SOG) / DVI/BNC	VGA (SOG) / DVI/BNC	
	Video inputs	CVBS / Component / HDMI	CVBS / Component / HDMI	CVBS / Component / HDMI	
	PC outputs	DVI OUT / BNC OUT	DVI OUT / BNC OUT	DVI OUT / BNC OUT	
	Audio outputs	STEREO JACK	STEREO JACK	STEREO JACK	
	Audio inputs	STEREO L/R (AV) JACK (PC)	STEREO L/R (AV) JACK (PC)	STEREO L/R (AV) JACK (PC)	
	MDC	RS232C IN/OUT	RS232C IN/OUT	RS232C IN/OUT	
	5V OUT	X	X	X	
Power	Power Consumption	350W	420W	560W	
	Power Consumption at Stand-by	2W	2W	2W	
	Power Consumption at Power-off				
	Power Supply	AC100-240 V~(+/- 10 %), 50/60Hz	AC100-240 V~(+/- 10 %), 50/60Hz	AC100-240 V~(+/- 10 %), 50/60Hz	
Mechanical Spec	VESA Mount	600 X 400mm	600 X 400mm	676 X 407mm	
	Cabinet Color No	Black	Black	Black	
	Weight (Set/Package):kg	Normal 32.7/39	33.7/40	51.8 / 63	
	Protection Glass				
	Dimension (W/O Stand):mm	Normal 1204.6 X 362.4 X 773.2	1204.6 X 362.4 X 773.2	1503.5 X 99.4 X 894.0	
	Protection Glass				
	Dimension (With Stand):mm	1204.6 X 97.1 X 724.1	1204.6 X 97.1 X 724.1		
	Packing Dimension:mm	1325 X 315 X 842	1325 X 315 X 842	1640 X 420 X 1030	
	Bezel Width:mm				
	Protection Glass	Yes	Yes	Yes	
Operation	Operating Temperature	Normal 0°C ~ 40°C	0°C ~ 40°C	0°C ~ 40°C	
	Protection Glass				
	Humidity	20 ~ 80%	20 ~ 80%	20 ~ 80%	
	MTBF	100,000 hours	100,000 hours	100,000 hours	
Feature	Network	STEREO L/R(AV) JACK (PC)	STEREO L/R(AV) JACK (PC)	STEREO L/R(AV) JACK (PC)	
	Speaker	10W X 2 (built in)	10W X 2 (built in)	10W X 2 (built in)	
	Special Features	- Digital Loop out - BNC loopout - Built in Speakers - Anti Burn-in S/W - RS-232C - Video Wall - Brightness Sensor - Built in FAN	- Digital Loop out - BNC loopout - Built in Speakers - Anti Burn-in S/W - RS-232C - Video Wall - Brightness Sensor - Built in FAN	- Digital Loop out - BNC loopout - Built in Speakers - Anti Burn-in S/W - RS-232C - Video Wall - Brightness Sensor - Built in FAN	
	Energy Star 5.0 Certified	Yes	Yes	Yes	
	Network	Operating System	Network Support with SBB	Network Support with SBB	Network Support with SBB
		CPU			
		FDM			
		Memory			
		Ethernet			
		USB			
VGA Out					
MagicInfo features					
Accessories	Manuals	Quick Setup Guide, Warranty Card, Application CD	Quick Setup Guide, Warranty Card, Application CD	Quick Setup Guide, Warranty Card, Application CD	
	Cables	Power Cord, D-sub	Power Cord, D-sub	Power Cord, D-sub	
	Others	Remote controller, Batteries, Ferrite cores	Remote controller, Batteries, Ferrite cores	Remote controller, Batteries, Ferrite cores	

* Design & Specifications are subject to change without notice.

LCD DR series

Outdoor Solution

Model		460DR (KIT)	460DRn (KIT)	700DRn (KIT)
Panel	Diagonal Size	46"	46"	70"
	Type	S-PVA (DID)	S-PVA (DID)	S-PVA (DID)
	Resolution	1366 X 768	1366 X 768	1920 X 1080
	Pixel Pitch	0.7455(H) X 0.7455(V)	0.7455(H) X 0.7455(V)	0.807(H) X 0.807(V)
	Brightness(Typ.)	1500 cd/m²	1500 cd/m²	2000 cd/m²
	Contrast Ratio	3500:1	3500:1	2000:1
	Dynamic C/R			3000:1
	Viewing Angle(H/M)	178/178	178/178	178/178
	Response Time(G-to-G)	8ms	8ms	8ms
	Color Space(CIE1931)	50%	50%	50%
Connectivity	PC inputs	VGA/DVI/BNC/PC (Support SOG)	VGA/DVI/BNC/PC (Support SOG)	VGA/DVI/PC (Support SOG)
	Video inputs	CVBS / S-Video / Component / HDMI	CVBS / S-Video / Component / HDMI	CVBS / HDMI
	PC outputs	BNC OUT	BNC OUT	N/A
	Audio outputs	STEREO L/R	STEREO L/R	STEREO L/R
	Audio inputs	STEREO L/R	STEREO L/R	STEREO L/R
	MDC	RS232C IN/OUT	RS232C IN/OUT	RS232C IN/OUT
	5V OUT	X	X	X
Power	Power Consumption	340W	400W	2kW (max) / 1.8kW (Typ.)
	Power Consumption at Stand-by	less than 2W	less than 5W	less than 6W
	Power Consumption at Power-off	less than 1W	less than 5W	less than 6W
	Power Supply	AC100-240 V~(+/- 10 %), 50/60Hz	AC100-240 V~(+/- 10 %), 50/60Hz	AC100-240 V~(+/- 10 %), 50/60Hz
Mechanical Spec	VESA Mount	N/A	N/A	N/A
	Cabinet Color No			
	Weight (Set/Package):kg	Normal 24.7 / 30.7	26.2 / 32.2	TBD
	Protection Glass	N/A	N/A	N/A
	Dimension (W/O Stand):mm	Normal 650.6 X 1047.4 X 116.7	650.6 X 1047.4 X 116.7	TBD
	Protection Glass	N/A	N/A	N/A
	Dimension (With Stand):mm	N/A	N/A	N/A
	Packing Dimension:mm	1165.0 X 768.0 X 290.0	1165.0 X 768.0 X 290.0	TBD
	Bezel Width:mm	11 (Panel)	11 (Panel)	N/A
	Protection Glass	N/A	N/A	TBD
Operation	Operating Temperature	Normal 0°C ~ 40°C	10°C ~ 40°C	10°C ~ 40°C
	Protection Glass	N/A	N/A	N/A
	Humidity	10 ~ 80%	10 ~ 80%	10 ~ 80%
	MTBF	50,000 hours	50,000 hours	50,000 hours
Feature	Network	X	0 (MagicInfo Pro)	0 (MagicInfo Pro)
	Speaker	X	X	X
	Special Features	- Kit type - Air Conditioner or Air Conditioner Guide supported	- Kit type - Air Conditioner or Air Conditioner Guide supported	- Kit type - Air Conditioner or Air Conditioner Guide supported
	Energy Star 5.0 Certified			
Network	Operating System	N/A	Window XP Embedded	Window XP Embedded
	CPU		Dual-Core CPU (2.3GHz)	Dual-Core CPU (2.3GHz)
	FDM		4GB	4GB
	Memory		DDR2 1GB	DDR2 1GB
	Ethernet		Gigabit LAN	Gigabit LAN
	USB		3 USB	3 USB
	VGA Out		N/A	N/A
	MagicInfo features		-Contents Play (Photo, Movie, Music, Offices, PDF, Flash, Web Page, Text, Input sources) -Contents scheduler -MDC via Network -Diagnosis (Lamp, Temperature, Fan, etc.) -Network System information -Asset management - Global Network	-Contents Play (Photo, Movie, Music, Offices, PDF, Flash, Web Page, Text, Input sources) -Contents scheduler -MDC via Network -Diagnosis (Lamp, Temperature, Fan, etc.) -Network System information -Asset management - Global Network
Accessories	Manuals	Quick Setup Guide, Warranty Card, User's Guide	Quick Setup Guide, Warranty Card, User's Guide	Quick Setup Guide, Warranty Card, User's Guide
	Cables	D-Sub Cable, Power Cord	D-Sub Cable, Power Cord	D-Sub Cable, Power Cord
	Others	Remote Control, Batteries, BNC to RCA Adaptor Jack	Remote Control, Batteries, BNC to RCA Adaptor Jack	Remote Control, Batteries, BNC to RCA Adaptor Jack

* Design & Specifications are subject to change without notice.

LCD DRn-A series

Outdoor Solution

Model		460DRn-A	700DRn-A	
Panel	Diagonal Size	46"	70"	
	Type	S-PVA (DID)	S-PVA (DID)	
	Resolution	1366 X 768	1920 X 1080	
	Pixel Pitch	0.7455(H) X 0.7455(V)	0.807(H) X 0.807(V)	
	Brightness(Typ.)	1500 cd/m ²	2000 cd/m ²	
	Contrast Ratio	3500:1	2000:1	
	Dynamic C/R	5000:1	3000:1	
	Viewing Angle(H/V)	178 / 178	178 / 178	
	Response Time(G-to-G)	8ms	8ms	
	Color Space(CIE1931)	50%	50%	
Connectivity	PC inputs	VGA/DVI/PC (Support SOG)	VGA/DVI/PC (Support SOG)	
	Video Inputs	CVBS / HDMI	CVBS / HDMI	
	PC outputs	N/A	N/A	
	Audio outputs	STEREO L/R	STEREO L/R	
	Audio inputs	STEREO L/R	STEREO L/R	
	MDC	RS232C IN/OUT	RS232C IN/OUT	
	5V OUT	X	X	
Power	Power Consumption	1.6kW (max) / 1.51kW (typ.)	2.2kW (max) / 2kW (typ.)	
	Power Consumption at Stand-by	50W	6W	
	Power Consumption at Power-off	50W	6W	
	Power Supply	AC100-240 V~(+/- 10 %), 50/60Hz	AC100-240 V~(+/- 10 %), 50/60Hz	
Mechanical Spec	VESA Mount	N/A	N/A	
	Cabinet Color No	BLACK	BLACK	
	Weight (Set/Package):kg	Normal N/A	N/A	
		Protection Glass	165.0 / 180.0	350 / 370
	Dimension (W/O Stand):mm	Normal N/A	N/A	
		Protection Glass	650.6 X 1047.4 X 116.7	2145 X 1120 X 250
	Dimension (With Stand):mm		742.0 X 1947.3 X 675.5	2200 X 1120 X 750
	Packing Dimension:mm		957 X 2045 X 805	848 X 2022 X 778
Bezel Width:mm		N/A	N/A	
Protection Glass		Default (5mm)	Default (5mm)	
Operation	Operating Temperature	Normal N/A	N/A	
		Protection Glass	-35°C ~ 45°C	-20°C ~ 40°C
	Humidity		10 ~ 80%	10 ~ 80%
	MTBF		50,000 hours	50,000 hours
Feature	Network		0 (MagicInfo 1 adv)	0 (MagicInfo 1 adv)
	Speaker		10W X 2 (built-in)	10W X 2 (built-in)
	Special Features		- capacitance type touch	- Built-in Fan
			- Built-in Air Conditioner	- Housing type
			- Housing type	- shock sensor
			- shock sensor	- support Yifi, Bluetooth
			- support Yifi, Bluetooth	- Brightness sensor
			- Brightness sensor	- Lamp Error detection
			- Lamp Error detection	- temperature Sensor
			- temperature Sensor	- RS232C
			- RS232C	- Built in speaker
			- Built in speaker	
	Energy Star 5.0 Certified		Inapplicable	Inapplicable
Network	Operating System		Window XP Embedded	Window XP Embedded
	CPU		Dual-Core CPU (2.3GHz)	Dual-Core CPU (2.3GHz)
	FDM		HDD 40GB	HDD 40GB
	Memory		DDR2 1GB	DDR2 1GB
	Ethernet		Gigabit LAN	Gigabit LAN
	USB		5 USB	5 USB
	VGA Out		1 VGA Out	
	MagicInfo features		-Contents Play (Photo, Movie, Music, Offices, PDF, Flash, Web Page, Text, Input sources)	-Contents Play (Photo, Movie, Music, Offices, PDF, Flash, Web Page, Text, Input sources)
			-Contents scheduler	-Contents scheduler
			-MDC via Network	-MDC via Network
			-Diagnosis (Lamp, Temperature, etc.)	-Diagnosis (Lamp, Temperature, Fan, etc.)
			-Network System information	-Network System information
			-Asset management	-Asset management
		- Global Network	- Global Network	
Network	Manuals		Quick Setup Guide, Warranty Card, User's Guide	Quick Setup Guide, Warranty Card, User's Guide
	Cables		Ground wire, Power Cord	Ground wire, Power Cord
	Others		Remote Control, Batteries	Remote Control, Batteries

* Design & Specifications are subject to change without notice.

LCD DRn-s series

Semi-Outdoor Solution

Model		460DR-S	460DRn-S		
Panel	Diagonal Size	46"	46"		
	Type	S-PVA (DID)	S-PVA (DID)		
	Resolution	1366 X 768	1366 X 768		
	Pixel Pitch	0.7455(H) X 0.7455(V)	0.7455(H) X 0.7455(V)		
	Brightness(Typ.)	1500cd/m ²	1500cd/m ²		
	Contrast Ratio	3500:1	3500:1		
	Dynamic C/R	5000:1	5000:1		
	Viewing Angle(H/V)	178/178	178/178		
	Response Time(G-to-G)	8ms	8ms		
	Color Space(CIE1931)	50%	50%		
Connectivity	PC inputs	VGA / DVI / PC (Support SOG)	VGA / DVI / PC (Support SOG)		
	Video Inputs	CVBS / HDMI	CVBS / HDMI		
	PC outputs	N/A	N/A		
	Audio outputs	STEREO L/R	STEREO L/R		
	Audio inputs	STEREO L/R	STEREO L/R		
	MDC	RS232C IN/OUT	RS232C IN/OUT		
	5V OUT	0	0		
Power	Power Consumption	450W	520W		
	Power Consumption at Stand-by	2W	5W		
	Power Consumption at Power-off	1W	5W		
	Power Supply	AC100-240 V~(+/- 10 %), 50/60Hz	AC100-240 V~(+/- 10 %), 50/60Hz		
Mechanical Spec	VESA Mount	600 X 400mm	600 X 400mm		
	Cabinet Color No	Black / Silver	Black / Silver		
	Weight (Set/Package):kg	Normal N/A	N/A		
		Protection Glass	48/54 (Landscape), 47/53 (Portrait)	48/54 (Landscape), 47/53 (Portrait)	
	Dimension (W/O Stand):mm	Normal N/A	N/A		
		Protection Glass	1124.5 X 773.0 X 160.0 (Landscape), 678 X 1219.5 X 160.0 (Portrait)	1124.5 X 773.0 X 160.0 (Landscape), 678 X 1219.5 X 160.0 (Portrait)	
	Dimension (With Stand):mm		N/A	N/A	
	Packing Dimension:mm		1240 X 890 X 350 (Landscape), 803 X 1330 X 350 (Portrait)	1240 X 890 X 350 (Landscape), 803 X 1330 X 350 (Portrait)	
Bezel Width:mm		53.3 (BOTTOM 148.3)	53.3 (BOTTOM 148.3)		
Protection Glass		Default	Default		
Operation	Operating Temperature	Normal N/A	N/A		
		Protection Glass	0°C ~ 25°C	10°C ~ 25°C	
	Humidity		10 ~ 80%	10 ~ 80%	
	MTBF		50,000 hours	50,000 hours	
Feature	Network		X	0 (MagicInfo Pro)	
	Speaker		0	0	
	Special Features		- Built-in Cross Flow Fan (Landscape : 3ea, Portrait : 2ea)	- Built-in Cross Flow Fan (Landscape : 3ea, Portrait : 2ea)	
			- High Brightness Panel	- High Brightness Panel	
			- Lamp Error Detection	- Lamp Error Detection	
			- Brightness Sensor	- Brightness Sensor	
			- RS232C	- RS232C	
	Energy Star 5.0 Certified		Inapplicable	Inapplicable	
	Network	Operating System		N/A	Window XP Embedded
		CPU			Dual-Core CPU (2.3GHz)
		FDM			4GB
		Memory			SEC DDR2 1GB
		Ethernet			Marvell 88E8055 Gigabit LAN
USB				5 USB	
VGA Out					
MagicInfo features				-Contents Play (Photo, Movie, Music, Offices, PDF, Flash, Web Page, Text, Input sources)	
				-Contents scheduler	
				-MDC via Network	
				-Diagnosis (Lamp, Temperature, Fan, etc.)	
				-Network System information	
				-Asset management	
			- Global Network		
Network	Manuals		Quick Setup Guide, Warranty Card, User's Guide	Quick Setup Guide, Warranty Card, User's Guide	
	Cables		D-Sub Cable, Power Cord	D-Sub Cable, Power Cord	
	Others		Remote Control, Batteries, Core-ferrite	Remote Control, Batteries, Core-ferrite	

* Design & Specifications are subject to change without notice.

LCD DX-S series

Semi-Outdoor Solution

LCD DMn

Indoor Billboard Solution

Model		400DX-S	400DXn-S	460DX-S	460DXn-S	
Panel	Diagonal Size	40"	40"	46"	46"	
	Type	S-PVA (DID)	S-PVA (DID)	S-PVA (DID)	S-PVA (DID)	
	Resolution	1920 X 1080	1920 X 1080	1920 X 1080	1920 X 1080	
	Pixel Pitch	0.648(H) X 0.648(W)	0.648(H) X 0.648(W)	0.7455(H) X 0.7455(V)	0.7455(H) X 0.7455(V)	
	Brightness(Typ.)	700 cd/m ²	700 cd/m ²	700cd/m ²	700cd/m ²	
	Contrast Ratio	3000:1	3000:1	3500:1	3500:1	
	Dynamic C/R	5000:1	5000:1	5000:1	5000:1	
	Viewing Angle(H/V)	178/178	178/178	178/178	178/178	
	Response Time(G-to-G)	8ms	8ms	8ms	8ms	
	Color Space(CIE1931)	72%	72%	72%	72%	
	Connectivity	PC inputs	VGA/DVI/PC (Support SOG)	VGA/DVI/PC (Support SOG)	VGA/DVI/PC (Support SOG)	VGA/DVI/PC (Support SOG)
		Video Inputs	CVBS / HDMI	CVBS / HDMI	CVBS / HDMI	CVBS / HDMI
		PC outputs	N/A	N/A	N/A	N/A
Audio outputs		STEREO L/R	STEREO L/R	STEREO L/R	STEREO L/R	
Audio inputs		STEREO L/R	STEREO L/R	STEREO L/R	STEREO L/R	
MDC		RS232C IN/OUT	RS232C IN/OUT	RS232C IN/OUT	RS232C IN/OUT	
5V OUT		0	0	0	0	
Power		Power Consumption	290W (max) / 250W (typ.)	360W (max) / 320W (typ.)	340W (max) / 300W (typ.)	410W (max) / 370W (typ.)
		Power Consumption at Stand-by	less than 2W	less than 5W	less than 2W	less than 5W
		Power Consumption at Power-off	less than 1W	less than 5W	less than 1W	less than 5W
	Power Supply	AC100-240 V~(+/- 10 %), 50/60Hz	AC100-240 V~(+/- 10 %), 50/60Hz	AC100-240 V~(+/- 10 %), 50/60Hz	AC100-240 V~(+/- 10 %), 50/60Hz	
	Mechanical Spec	VESA Mount	600 X 400mm	600 X 400mm	600 X 400mm	600 X 400mm
Cabinet Color No		Silver (GR91) / Black (BK07)	Silver (GR91) / Black (BK07)	Silver (GR91) / Black (BK07)	Silver (GR91) / Black (BK07)	
Weight (Set/Package):kg		Normal	N/A	N/A	N/A	N/A
		Protection Glass	40.0 / 45.0	41.0 / 46.0	47.0 / 53.0	48.0 / 54.0
Dimension (W/O Stand):mm		Normal	N/A	N/A	N/A	N/A
		Protection Glass	995.5 X 703.5 X 156	995.5 X 703.5 X 156	1124.5 X 773 X 160	1124.5 X 773 X 160
Dimension (With Stand):mm		None Stand Model	None Stand Model	None Stand Model	None Stand Model	
Packing Dimension:mm		1087 X 799 X 290	1087 X 799 X 290	1240 X 890 X 350	1240 X 890 X 350	
Bezel Width:mm						
Protection Glass		Default	Default	Default	Default	
Operation		Operating Temperature	Normal	N/A	N/A	N/A
			Protection Glass	0°C ~ 25°C (under sunlight), 0°C ~ 40°C (without Sunlight)	10°C ~ 25°C (under sunlight), 10°C ~ 40°C (without Sunlight)	0°C ~ 25°C (under sunlight), 0°C ~ 40°C (without Sunlight)
		Humidity	10 ~ 80%	10 ~ 80%	10 ~ 80%	10 ~ 80%
	MTBF	50,000 hours	50,000 hours	50,000 hours	50,000 hours	
Feature	Network	X	0 (MagicInfo Pro)	X	0 (MagicInfo Pro)	
	Speaker	10W X 2 (built-in)	10W X 2 (built-in)	10W X 2 (built-in)	10W X 2 (built-in)	
	Special Features	- Lamp Error Detection	- Lamp Error Detection	- Lamp Error Detection	- Lamp Error Detection	
		- Brightness Sensor	- Brightness Sensor	- Brightness Sensor	- Brightness Sensor	
		- Temperature Sensor	- Temperature Sensor	- Temperature Sensor	- Temperature Sensor	
		- Built in Fan	- Built in Fan	- Built in Fan	- Built in Fan	
	- RS232C	- RS232C	- RS232C	- RS232C		
Network	Energy Star 5.0 Certified	inapplicable	inapplicable	inapplicable	inapplicable	
	Operating System	N/A	Window XP Embedded	N/A	Window XP Embedded	
	CPU		Dual-Core CPU (2.3GHz)		Dual-Core CPU (2.3GHz)	
	FDM		4GB		4GB	
	Memory		DDR2 1GB		DDR2 1GB	
	Ethernet		Gigabit LAN		Gigabit LAN	
	USB		3 USB		3 USB	
	VGA Out		N/A		N/A	
	MagicInfo features	-Contents Play (Photo, Movie, Music, Offices, PDF,		-Contents Play (Photo, Movie, Music, Offices, PDF,		-Contents Play (Photo, Movie, Music, Offices, PDF,
		Flash, Web Page, Text, Input sources)		Flash, Web Page, Text, Input sources)		Flash, Web Page, Text, Input sources)
		-Contents scheduler		-Contents scheduler		-Contents scheduler
		-MDC via Network		-MDC via Network		-MDC via Network
		-Diagnosis (Lamp, Temperature, Fan, etc.)		-Diagnosis (Lamp, Temperature, Fan, etc.)		-Diagnosis (Lamp, Temperature, Fan, etc.)
-Network System information			-Network System information		-Network System information	
-Asset management			-Asset management		-Asset management	
-Global Network			-Global Network		-Global Network	
Manuals		Quick Setup Guide, Warranty Card,	Quick Setup Guide, Warranty Card,	Quick Setup Guide, Warranty Card,	Quick Setup Guide, Warranty Card,	
Cables		Application CD	Application CD	Application CD	Application CD	
Others	D-Sub Cable, Power Cord	D-Sub Cable, Power Cord	D-Sub Cable, Power Cord	D-Sub Cable, Power Cord		
	Remote Controller, Batteries	Remote Controller, Batteries	Remote Controller, Batteries	Remote Controller, Batteries		

* Design & Specifications are subject to change without notice.

Model		460DMn		
Panel	Diagonal Size	46"		
	Type	S-PVA (DID)		
	Resolution	1920 X 1080		
	Pixel Pitch	0.7455(H) X 0.7455(V)		
	Brightness(Typ.)	700 cd/m ²		
	Contrast Ratio	2500:1		
	Dynamic C/R	10000:1		
	Viewing Angle(H/V)	178 / 178		
	Response Time(G-to-G)	8ms		
	Color Space(CIE1931)	50%		
	Connectivity	PC inputs	N/A	
		Video Inputs	HDMI	
		PC outputs	N/A	
Audio outputs		N/A		
Audio inputs		N/A		
MDC		N/A		
5V OUT		N/A		
Power		Power Consumption	355W (max) / 305W (typ.)	
		Power Consumption at Stand-by	5W	
		Power Consumption at Power-off	5W	
	Power Supply	AC100-240 V~(+/- 10 %), 50/60Hz		
	Mechanical Spec	VESA Mount	N/A	
Cabinet Color No		AL & SILVER		
Weight (Set/Package):kg		Normal	N/A	
		Protection Glass	97.7 / 128	
Dimension (W/O Stand):mm		Normal	N/A	
		Protection Glass	712 X 1947.5 X 862.1	
Dimension (With Stand):mm		712 X 1947.5 X 862.1		
Packing Dimension:mm		874 X 2055 X 989		
Bezel Width:mm		N/A		
Protection Glass		Default (5mm)		
Operation		Operating Temperature	Normal	N/A
			Protection Glass	10°C ~ 40°C
		Humidity	10 ~ 80%	
	MTBF	50,000 hours		
Feature	Network	0 (MagicInfo Pro, i)		
	Speaker	10W X 2 (built-in)		
	Special Features	- Housing type		
		- Built in Fan		
	- Built in speaker			
	Energy Star 5.0 Certified	inapplicable		
	Operating System	Window XP Embedded		
CPU	Dual-Core CPU (2.3GHz)			
FDM	HDD 40GB			
Memory	DDR2 1GB			
Ethernet	Gigabit LAN			
USB	4 USB			
VGA Out				
MagicInfo features	-Contents Play (Photo, Movie, Music, Offices, PDF, Flash, Web Page, Text,			
	Input sources)			
	-Contents scheduler			
	-MDC via Network			
	-Diagnosis (Lamp, Temperature, Fan, etc.)			
	-Network System information			
	-Asset management			
	-Global Network			
	Manuals	Quick Setup Guide, Warranty Card, User's Guide		
	Cables	Power Cord		
Others	Remote Control, Batteries			

* Design & Specifications are subject to change without notice.

LCD TS series

Touch Screen Solution

Model		230TSn	320TSn-2	400TSn-2	400TS-2
Panel	Diagonal Size	23"	32"(16:9)	32"(16:9)	40"
	Type	C-PVA	S-PVA	S-PVA	S-PVA
	Resolution	1920 X 1080	1366 X 768	1920 X 1080	1920 X 1080
	Pixel Pitch	0.2566(H) X 0.2566(V)	0.511(H) X 0.511(W)	0.648(H) X 0.648(W)	0.648(H) X 0.648(W)
	Brightness(Typ.)	300cd/m ²	400cd/m ²	450 cd/m ²	450 cd/m ²
	Contrast Ratio	3000:1	4000:1	4000:1	4000:1
	Dynamic C/R	5000:1	10,000:1	10,000:1	10,000:1
	Viewing Angle(H/M)	178 / 178	178 / 178	178 / 178	178 / 178
	Response Time(G-to-G)	8ms	8ms	8ms	8ms
	Color Space(CIE1931)	72%	72%	72%	72%
Connectivity	PC inputs	VGA(SOG)/HDMI	VGA/DVI/PC (Support SOG)	VGA/DVI/PC (Support SOG)	VGA/DVI/PC (Support SOG)
	Video Inputs	HDMI	CVBS/HDMI	CVBS/HDMI	CVBS/HDMI
	PC outputs	VGA	X	X	X
	Audio outputs	STEREO L/R(AV) JACK (PC)	STEREO L/R(AV) JACK (PC)	STEREO L/R(AV) JACK (PC)	STEREO L/R(AV) JACK (PC)
	Audio inputs	STEREO L/R	STEREO L/R	STEREO L/R	STEREO L/R
	MDC	RS232C IN/OUT	RS232C IN/OUT	RS232C IN/OUT	RS232C IN/OUT
	5V OUT	X	0	0	0
Power	Power Consumption	120W	220W (max) / 200W (typ.)	290W (max) / 228W (typ.)	220W (max) / 158W (typ.)
	Power Consumption at Stand-by	less than 5W	less than 5W	less than 5W	less than 5W
	Power Consumption at Power-off	less than 5W	less than 5W	less than 5W	less than 5W
	Power Supply	AC100-240 V~(+/- 10 %), 50/60Hz	AC100-240 V~(+/- 10 %), 50/60Hz	AC100-240 V~(+/- 10 %), 50/60Hz	AC100-240 V~(+/- 10 %), 50/60Hz
	VESA Mount	100 X 100mm	200 X 200mm	600 X 400mm	600 X 400mm
Mechanical Spec	Cabinet Color No	Black	Black (BK07)	Black (BK07)	Black (BK07)
	Weight (Set/Package):kg	Normal 8.35	N/A	N/A	N/A
	Protection Glass	10.0	19.5 / 23.4	28.6 / 33.6	27.2 / 32.2
	Dimension (W/O Stand):mm	Normal 557.5 X 339.0 X 79.2	N/A	N/A	N/A
	Protection Glass	787 X 482 X 116	973.2 X 584.4 X 128.1	973.2 X 584.4 X 128.1	973.2 X 584.4 X 128.1
	Dimension (With Stand):mm	N/A	787 X 544 X 311	973.2 X 645.4 X 311	973.2 X 645.4 X 311
	Packing Dimension:mm	648.0 X 428.0 X 175.0	890 X 590 X 231	1085 X 703 X 310	1085 X 703 X 310
	Bezel Width:mm	N/A	43.5	41.3	41.3
	Protection Glass	N/A	0	0	0
	Operation	Operating Temperature	Normal 10°C ~ 40°C	N/A	N/A
Protection Glass		N/A	10°C ~ 35°C	10°C ~ 35°C	10°C ~ 35°C
Humidity		10 ~ 80%	10 ~ 80%	10 ~ 80%	10 ~ 80%
MTBF		40,000 hours	50,000 hours	50,000 hours	50,000 hours
Feature	Network	0 (MagicInfo Pro.)	0 (MagicInfo Pro)	0 (MagicInfo Pro)	0 (MagicInfo Pro)
	Speaker	3W X 2 (built-in)	5W X 2 (built-in)	10W X 2(built-in)	10W X 2 (built-in)
	Special Features	- Touch Screen	- IR sensing touch (Internal connection)	- IR sensing touch (Internal connection)	- IR sensing touch (Internal connection)
		- Lamp Error Detection	- Lamp Error Detection	- Lamp Error Detection	- Lamp Error Detection
		- Brightness Sensor	- Brightness Sensor	- Brightness Sensor	- Brightness Sensor
		- Temperature Sensor	- Temperature Sensor	- Temperature Sensor	- Temperature Sensor
		- Built in Fan	- Built in Fan	- Built in Fan	- Built in Fan
		- RS232C	- RS232C	- RS232C	- RS232C
	Energy Star 5.0 Certified	Inapplicable	Inapplicable	Inapplicable	Inapplicable
	Network	Operating System	Windows XP Embedded Standard	Window XP Embedded	Window XP Embedded
CPU		Dual-Core CPU (2.3GHz)	Dual-Core CPU (2.3GHz)	Dual-Core CPU (2.3GHz)	
FDM		HDD 40GB	4GB	4GB	
Memory		DDR2 1GB	DDR2 1GB	DDR2 1GB	
Ethernet		Gigabit LAN	Gigabit LAN	Gigabit LAN	
USB		4 USBs	4USB	4USB	
VGA Out		N/A	1 VGA Out	1 VGA Out	
MagicInfo features		-Contents Play (Photo, Movie, Music, Offices, PDF, Flash, Web Page, Text, Input sources)	-Contents Play (Photo, Movie, Music, Offices, PDF, Flash, Web Page, Text, Input sources)	-Contents Play (Photo, Movie, Music, Offices, PDF, Flash, Web Page, Text, Input sources)	
		-Contents scheduler	-Contents scheduler	-Contents scheduler	
		-MDC via Network	-MDC via Network	-MDC via Network	
		-Diagnosis (Lamp, Temperature, etc.)	-Diagnosis (Lamp, Temperature, etc.)	-Diagnosis (Lamp, Temperature, etc.)	
		-Network System information	-Network System information	-Network System information	
		-Asset management	-Asset management	-Asset management	
		- Global Network			
Accessories	Manuals	Quick Setup Guide, Warranty Card, Application CD	Quick Setup Guide, Warranty Card, Application CD	Quick Setup Guide, Warranty Card, Application CD	Quick Setup Guide, Warranty Card, Application CD
	Cables	Power Cord	D-Sub, Power Cord	D-Sub, Power Cord	D-Sub, Power Cord
	Others	Remote Controller, Batteries	Remote Controller, Batteries	Remote Controller, Batteries	Remote Controller, Batteries

* Design & Specifications are subject to change without notice.

Model		460TSn-2	700TSn-2	820TSn-2
Panel	Diagonal Size	46"	70"	82"
	Type	S-PVA	S-PVA (DID)	S-PVA (DID)
	Resolution	1920 X 1080	1920 X 1080	1920 X 1080
	Pixel Pitch	0.53025(H) X 0.53025(V)	0.807(H) X 0.807(V)	0.9405(H) X 0.9405(V)
	Brightness(Typ.)	450cd/m ²	600cd/m ²	600cd/m ²
	Contrast Ratio	4000:1	2500:1	2000:1
	Dynamic C/R	10,000:1	2500:1	2500:1
	Viewing Angle(H/M)	178/178	178/178	178/178
	Response Time(G-to-G)	8ms	8ms	8ms
	Color Space(CIE1931)	72%	72%	72%
Connectivity	PC inputs	VGA/DVI/PC (Support SOG)	VGA/DVI/PC (Support SOG)	VGA/DVI/PC (Support SOG)
	Video Inputs	CVBS /HDMI	CVBS /HDMI	CVBS /HDMI
	PC outputs	X	DVI OUT	DVI OUT
	Audio outputs	STEREO L/R(AV) JACK (PC)	STEREO JACK	STEREO JACK
	Audio inputs	STEREO L/R	STEREO L/R(AV) JACK (PC)	STEREO L/R(AV) JACK (PC)
	MDC	RS232C IN/OUT	RS232C IN/OUT	RS232C IN/OUT
	5V OUT	0	X	X
Power	Power Consumption	330W (max) / 310W (typ.)	790W (max) / 680W (typ.)	1kW (max) / 930W (typ.)
	Power Consumption at Stand-by	less than 5W	less than 5W	less than 5W
	Power Consumption at Power-off	less than 5W	less than 5W	less than 5W
	Power Supply	AC100-240 V~(+/- 10 %), 50/60Hz	AC100-240 V~(+/- 10 %), 50/60Hz	AC100-240 V~(+/- 10 %), 50/60Hz
	VESA Mount	600 X 400mm	800 X 400mm	900(1400) X 800mm
Mechanical Spec	Cabinet Color No	Black (BK07)	Black (BK07)	Black (BK07)
	Weight (Set/Package):kg	Normal N/A	N/A	N/A
	Protection Glass	34.3/40.0	122 / 148	140 / 175
	Dimension (W/O Stand):mm	Normal N/A	N/A	N/A
	Protection Glass	1104.2 X 658.4 X 134.3	1688 X 989 X 154	1915 X 1125 X 155
	Dimension (With Stand):mm	1104.2 X 720 X 311	1668 X 1094 X 500	1915 X 1230 X 500
	Packing Dimension:mm	1220 X 780 X 310	1825 X 1223 X 610	2095 X 1358 X 618
	Bezel Width:mm	40.3	55.2	53.3
	Protection Glass	0	0	0
	Operation	Operating Temperature	Normal 10°C ~ 40°C	N/A
Protection Glass		N/A	10°C ~ 35°C	10°C ~ 35°C
Humidity		10 ~ 80%	10 ~ 80%	10 ~ 80%
MTBF		50,000 hours	50,000 hours	50,000 hours
Feature	Network	0 (MagicInfo Pro)	0 (MagicInfo Pro)	0 (MagicInfo Pro)
	Speaker	10W X 2 (built-in)	15W X 2 (built-in)	15W X 2 (built-in)
	Special Features	- IR sensing touch (Internal connection)	- IR sensing touch (Internal connection)	- IR sensing touch (Internal connection)
		- Lamp Error Detection	- Lamp Error Detection	- Lamp Error Detection
		- Brightness Sensor	- Brightness Sensor	- Brightness Sensor
		- Temperature Sensor	- Temperature Sensor	- Temperature Sensor
		- Built in Fan	- Built in Fan	- Built in Fan
		- RS232C	- RS232C	- RS232C
		- PIP / PBP	- PIP / PBP	- PIP / PBP
		- Digital Loop out	- Digital Loop out	- Digital Loop out
Energy Star 5.0 Certified	Inapplicable	Inapplicable	Inapplicable	
Network	Operating System	Window XP Embedded	Window XP Embedded	Window XP Embedded
	CPU	Dual-Core CPU (2.3GHz)	Dual-Core CPU (2.3GHz)	Dual-Core CPU (2.3GHz)
	FDM	4GB	4GB	4GB
	Memory	DDR2 1GB	DDR2 1GB	DDR2 1GB
	Ethernet	Gigabit LAN	Gigabit LAN	Gigabit LAN
	USB	4USB	4USB	4USB
	VGA Out	1 VGA Out	1 VGA Out	1 VGA Out
	MagicInfo features	-Contents Play (Photo, Movie, Music, Offices, PDF, Flash, Web Page, Text, Input sources)	-Contents Play (Photo, Movie, Music, Offices, PDF, Flash, Web Page, Text, Input sources)	-Contents Play (Photo, Movie, Music, Offices, PDF, Flash, Web Page, Text, Input sources)
		-Contents scheduler	-Contents scheduler	-Contents scheduler
		-MDC via Network	-MDC via Network	-MDC via Network
		-Diagnosis (Lamp, Temperature, etc.)	-Diagnosis (Lamp, Temperature, etc.)	-Diagnosis (Lamp, Temperature, etc.)
		-Network System information	-Network System information	-Network System information
		-Asset management	-Asset management	-Asset management
Accessories	Manuals	Quick Setup Guide, Warranty Card, Application CD	Quick Setup Guide, Warranty Card, Application CD	Quick Setup Guide, Warranty Card, Application CD
	Cables	D-Sub, Power Cord	D-Sub, Power Cord	D-Sub, Power Cord
	Others	Remote Controller, Batteries	Remote Controller, Batteries	Remote Controller, Batteries

* Design & Specifications are subject to change without notice.

LCD 650TS series

E-board Solution

Model	650TS		
Panel	Diagonal Size	65"	
	Type	AMV3	
	Resolution	1920 X 1080	
	Pixel Pitch	0.744 X 0.744	
	Brightness(Typ.)	510cd/m ²	
	Contrast Ratio	5000:1	
	Dynamic C/R	10,000:1	
	Viewing Angle(H/V)	178/178	
	Response Time(G-to-G)	5.5ms	
	Color Space(CIE1931)	72%	
Connectivity	PC inputs	VGA / DVI / PC (Support SOG)	
	Video Inputs	CVBS / HDMI	
	PC outputs	DVI OUT	
	Audio outputs	STEREO JACK	
	Audio inputs	STEREO L/R(AV) JACK (PC)	
	MDC	RS232C IN/OUT	
	5V OUT	X	
Power	Power Consumption	470W (max) / 430W (typ.)	
	Power Consumption at Stand-by	less than 2W	
	Power Consumption at Power-off	less than 1W	
	Power Supply	AC100-240 V~(+/- 10 %), 50/60Hz	
Mechanical Spec	VESA Mount	800 X 400mm	
	Cabinet Color No	Black (BK07)	
	Weight (Set/Package):kg	Normal Protection Glass	
	Dimension (W/O Stand):mm	Normal Protection Glass	
	Dimension (With Stand):mm	1554 X 924 X 138 1554 X 1029 X 500	
	Packing Dimension:mm	1690 X 1060 X 450	
	Bezel Width:mm	54	
	Protection Glass	0	
	Operation	Operating Temperature	Normal Protection Glass
		Humidity	10 ~ 80%
MTBF		50,000 hours	
Feature		Network	X
	Speaker	15W X 2(Built in) , Built-out (optional)	
	Special Features	-Optical sensing touch(External connection) - wireless MIC module (optional) - built out speaker (optional) - Temperature Sensor - Brightness Sensor - Built in Fan - Video Wall - Built in Speakers - RS232C	
	Energy Star 5.0 Certified	Inapplicable	
	Operating System	Network Support with Slide-in type SBB	
	CPU		
	FDM		
	Memory		
	Ethernet		
	USB		
VGA Out			
MagicInfo features			
Network	Manuals	Quick Setup Guide, Warranty Card, Application CD	
	Cables	D-Sub, Power Cord, usb cable	
	Others	Remote Controller, Batteries, touch pens	

* Design & Specifications are subject to change without notice.

uVending 2 series

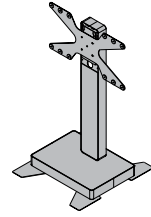
Ubiquitous Vending Machine

Model	460I-S		
Panel	Diagonal Size	46"	
	Type	S-PVA (DID)	
	Resolution	1920 X 1080	
	Pixel Pitch	0.7455mm(H) X 0.7456mm(V)	
	Brightness(Typ.)	616 cd/m ²	
	Contrast Ratio	1200:1	
	Dynamic C/R		
	Viewing Angle(H/V)	178/178	
	Response Time(G-to-G)	8ms	
	Color Space(CIE1931)		
Connectivity	PC inputs	X	
	Video Inputs	X	
	PC outputs		
	Audio outputs		
	Audio inputs		
	MDC		
	5V OUT		
Power	Power Consumption	TBD	
	Power Consumption at Stand-by	TBD	
	Power Consumption at Power-off		
	Power Supply	90 ~ 264 Vac (50/60Hz)	
Mechanical Spec	VESA Mount	NONE	
	Cabinet Color No	NONE	
	Weight (Set/Package):kg	Normal Protection Glass	
	Dimension (W/O Stand):mm	Normal Protection Glass	
	Dimension (With Stand):mm	1114 X 664 X 157	
	Packing Dimension:mm	1252 X 803 X 367	
	Bezel Width:mm	31 (23)	
	Protection Glass	YES (TOUCH MODULE)	
	Operation	Operating Temperature	Normal Protection Glass
		Humidity	10 ~ 80%
MTBF			
Feature		Network	0 (MagicInfo Pro)
	Speaker	10W X 2 EA	
	Special Features	- Wifi - Bluetooth - Camera - Shock sensor	
	Energy Star 5.0 Certified	inapplicable	
	Operating System	Window XP Embedded	
	CPU	Dual-Core CPU (2.3GHz)	
	FDM		
	Memory	DDR 1GB	
	Ethernet	GbE Controller	
	USB	4USB	
VGA Out			
MagicInfo features	-Contents Play (Photo, Movie, Music, Offices, PDF, Flash, Web Page, Text, Input sources) -Contents scheduler -MDC via Network -Diagnosis (Lamp, Temperature, Fan, etc.) -Network System information -Asset management - Global Network		
Network	Manuals	TBD	
	Cables	Power cable, USB cable	
	Others	WiFi, Bluetooth, Camera, Shock sensor	

* Design & Specifications are subject to change without notice.

LFD Accessory

Welcome Board



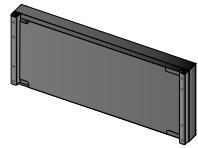
Product Name
STN-520WE

Samsung ID Stand



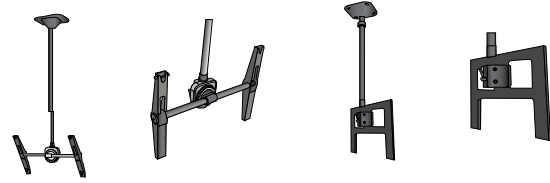
Product Name
MID40
MID46
MID462

SAMSUNG ID DUMMY KIT



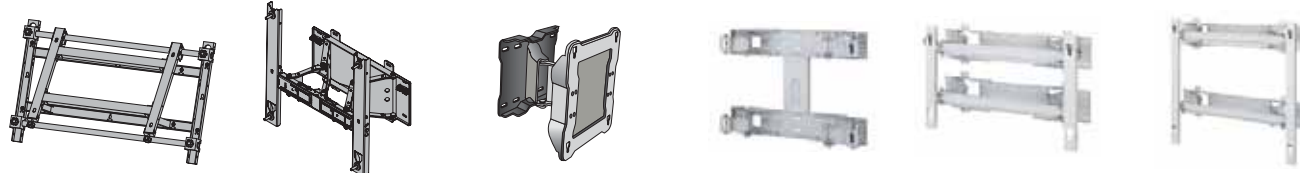
Product Name	WIDTH	DEPTH	HEIGHT
MID40DS	913.6	94	416
MID46DS	1049.4	94	416
MID462DS	1024.4	94	416

Ceiling Mount



Product Name **CML500D** Product Name **CML630D**

Wall Mount



Product Name **WMN4270S** Product Name **WMN460UTD** Product Name **WMN4070D** Product Name **WMN5770D** Product Name **WMN-7070D** Product Name **WMN-8270D**

Item	Model	Wall Mount		Ceiling Mount	Welcome Board	Stand	Samsung ID	Samsung ID Accessory Kit	Samsung ID Dummy Kit	Speaker
		Horizontal	Vertical							
LCD	320MX(n)-2	WMTL4001D		X	X	STN-L3257D	X	X	X	Built In
	400MX(n)-2	WMN4250D	WMN4240D	CML500D						
	400CX(n)-2					STN-520WE (New)				
	400TSN-2									
	400DX(n)-2									
	460MX(n)-2	WMN5770D								
	460CX(n)-2									
	460TSN-2									
	460DX(n)-2									
	400UX(n)-2	X						MID40	MID4046K	MID40DS
	460UX(n)-2	WMN5770D						MID46	MID4046K	MID40DS
	460UT(n)	WMN460UTD						MID462	MID462K	MID462DS
	520DX(n)	WMN5770D			X			X	X	X
	570DX(n)					X				
	650MP	WMN7070D	X				STN-L65D			
	650TS									SP-L570DB
700DX(n)		VMN7070D				Bundle				
700TSN-2										
820DX(n)	WMN8270D	WMN8270D								
820TSN-2										
PDP	P42H-2	WMN5770D		CML500D	STN-520WE (New)	STN-L3257D				
	P50HP					STN-P4063D				
	P50FP									
	P63FP			CML630D	X	SMM6330D				

